



Benham & Reeves

Providence Square, Bermondsey, SE1

£625 per week, £2,708 per month + fees

 2 Bedrooms  2 Bathrooms  Furnished

Smart and well-appointed apartment set within a gated residential development located moments from Shad Thames and within easy reach of The City and Canary Wharf.

Please [click here](#) for full detail

Property features

Unfurnished 2 Bedroom, 2 Bathroom Apartment | Bright Reception With Large Windows | Full Length Private Balcony With Water Front & River Aspect | Separate Kitchen With Fully Integrated Appliances | 2 Double Bedrooms | EPC-C | Fully Tiled Main Bathroom & En Suite Shower Wet Room | Gated Development With 24hr Concierge & Residents Gym | Storage / Utility Room | Moments From Shad Thames & A Short Walk To Bermondsey Station

For more information about this property,
please call our Wapping branch on

020 7680 8900

Redress & Client Money Protection :

Benham and Reeves are members of The Property Ombudsman redress scheme and have Client Money protection with ARLA Propertymark. You can find more information on our website at <https://www.benhamandreeves.com/membership/>



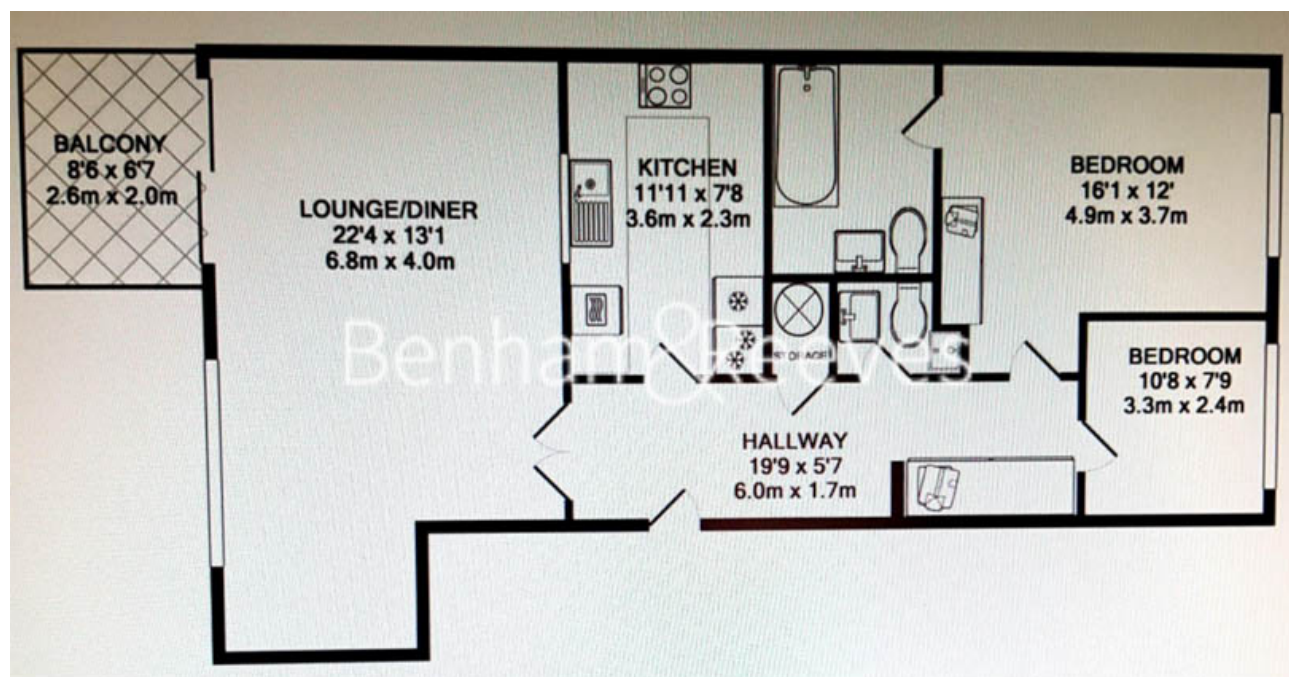
Benham & Reeves



Providence Square, Bermondsey, SE1

£625 per week, £2,708 per month + fees

www.benhams.com



| Score | Energy rating | Current | Potential |
|-------|---------------|---------|-----------|
| 92+ | A | | |
| 81-91 | B | | 82 B |
| 69-80 | C | 79 C | |
| 55-68 | D | | |
| 39-54 | E | | |
| 21-38 | F | | |
| 1-20 | G | | |

London branches open six days a week Mon - Sat

Canary Wharf | City | Colindale | Dartmouth Park | Ealing | Fulham
Hammersmith | Hampstead | Highgate | Hyde Park | Kensington | Kew
Knightsbridge | Nine Elms | Shoreditch | Southall | Surrey Quays
Wapping | Wembley | White City | Woolwich

International offices

China | Hong Kong SAR | India | Indonesia | Qatar | Malaysia | Middle East |
Singapore | South Africa | Thailand | Turkey

