



Benham & Reeves

Pickle Factory, Bermondsey, SE1

£727 per week, £3,150 per month + fees

🛏️ 2 Bedrooms 🚿 2 Bathrooms 🛋️ Furnished

Bright and airy modern apartment with unique views situated in a secure gated community with easy access transport Bermondsey Jubilee Station.

Please [click here](#) for full detail

Property features

Two Bedrooms & Two Bathrooms | Luxury Gated Development | Floor to Ceiling Windows For Maximum Natural Light | Private Gym for Residents | 24-hour concierge | EPC-B | Fantastic Location, short walk to Shad Thames & Bermondsey S | Ideal for Professionals | Landscaped beach garden, Resident BBQ. | Sonos Surround Sound system Fibre Broadband with Hyperoptics

For more information about this property,
please call our Surrey Quays branch on

020 7740 3050

Redress & Client Money Protection :

Benham and Reeves are members of The Property Ombudsman redress scheme and have Client Money protection with ARLA Propertymark. You can find more information on our website at <https://www.benhamandreeves.com/membership/>



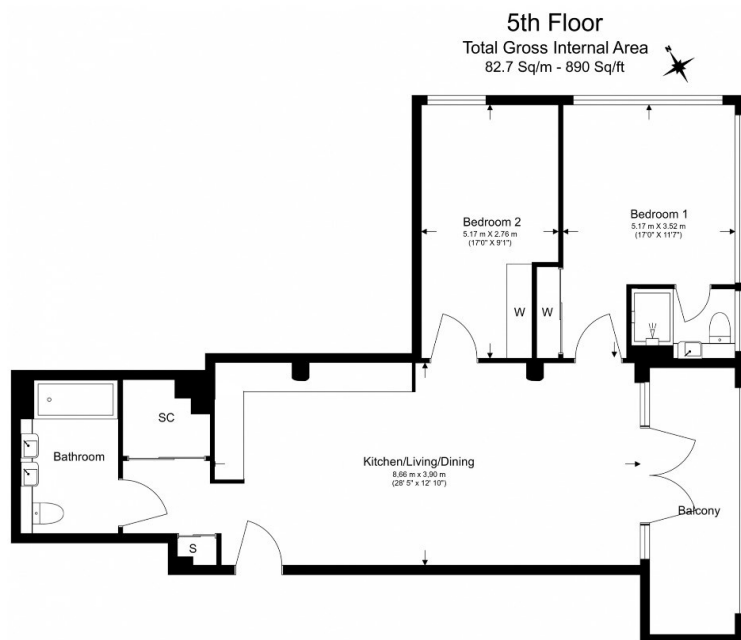
Benham & Reeves



Pickle Factory, Bermondsey, SE1

£727 per week, £3,150 per month + fees

www.benhams.com



Floor Plan measurements are approximate and are for illustrative purposes only. While we do not doubt the floor plans accuracy, we make no guarantee, warranty or representation as to the accuracy and completeness of the floor plan.

Score	Energy rating	Current	Potential
92+	A		
81-91	B	81 B	81 B
69-80	C		
55-68	D		
39-54	E		
21-38	F		
1-20	G		

London branches open six days a week Mon - Sat

Canary Wharf | City | Colindale | Dartmouth Park | Ealing | Fulham
Hammersmith | Hampstead | Highgate | Hyde Park | Kensington | Kew
Knightsbridge | Nine Elms | Shoreditch | Southall | Surrey Quays
Wapping | Wembley | White City | Woolwich

International offices

China | Hong Kong SAR | India | Indonesia | Qatar | Malaysia | Middle East | Pakistan
Singapore | South Africa | Thailand | Turkey



Benham & Reeves