



Benham & Reeves

Freda Street, Bermondsey, SE16

£496 per week, £2,149 per month + fees

🛏️ 1 Bedroom 🚿 1 Bathroom 🛋️ Furnished

A well-located furnished apartment within a 7-minute walk from Jubilee Station at Bermondsey and a pleasant walk into the City. Available Early August

Please [click here](#) for full detail

Property features

One Double Bedroom | One Bathroom | Furnished | Parking Available Separately | Skyline city views | EPC-B | Open Plan Reception | Video Entry System | Private Balcony | Nearby Bermondsey Underground station

For more information about this property, please call our Surrey Quays branch on

020 7740 3050

Redress & Client Money Protection :

Benham and Reeves are members of The Property Ombudsman redress scheme and have Client Money protection with ARLA Propertymark. You can find more information on our website at <https://www.benhams.com/membership/>



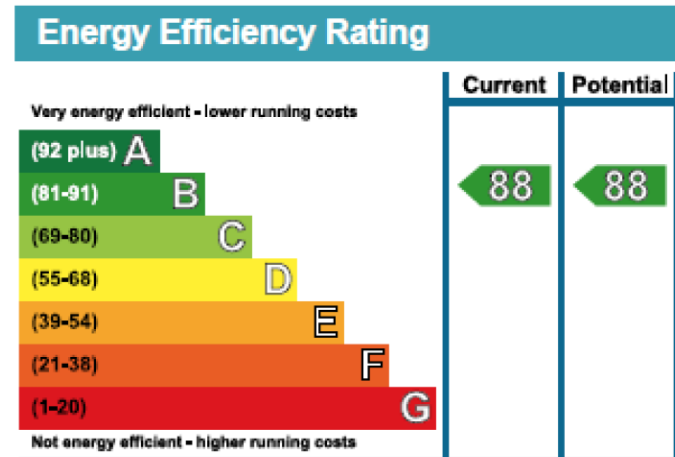
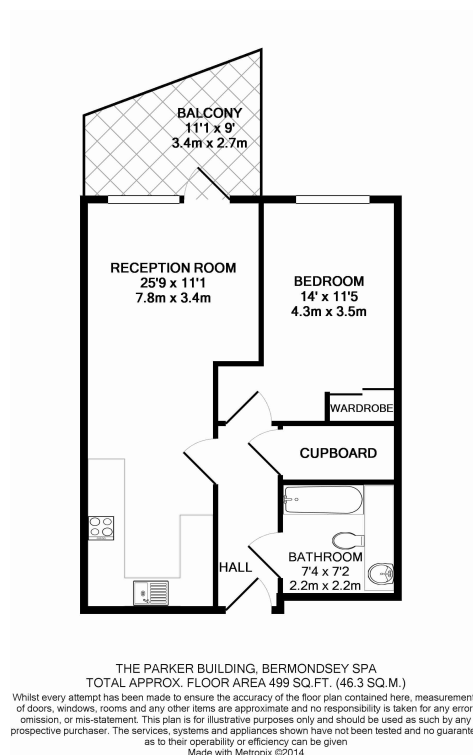
Benham&Reeves



Freda Street, Bermondsey, SE16

£496 per week, £2,149 per month + fees

www.benhams.com



London branches open six days a week Mon - Sat

Canary Wharf | City | Colindale | Dartmouth Park | Ealing | Fulham
Hammersmith | Hampstead | Highgate | Hyde Park | Kensington | Kew
Knightsbridge | Nine Elms | Shoreditch | Southall | Surrey Quays
Wapping | Wembley | White City | Woolwich

International offices

China | Hong Kong SAR | India | Indonesia | Qatar | Malaysia | Middle East | Pakistan
Singapore | South Africa | Thailand | Turkey



Benham & Reeves