



Benham & Reeves

Larkwood Avenue, Blackheath Hill, SE10

£496 per week, £2,150 per month + fees

 2 Bedrooms  2 Bathrooms  Furnished

Contemporary furnished 2nd floor apartment situated within a stunning development adjacent to Greenwich Park and ten minutes from Lewisham Train Station.

Please [click here](#) for full detail

Property features

Two bedroom | 2 Bathroom furnished flat located on the 2nd floor | Open plan kitchen with well known kitchen appliances | Wooden flooring in the reception plus kitchen and carpets in | Private balcony | EPC- B | Concierge service | Close to amenities | Lift access | 10 mins walk to Lewisham train station

For more information about this property,
please call our Woolwich branch on

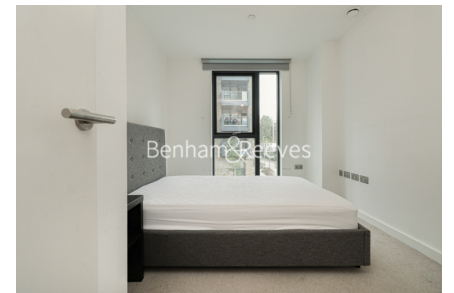
020 8051 0700

Redress & Client Money Protection :

Benham and Reeves are members of The Property Ombudsman redress scheme and have Client Money protection with ARLA Propertymark. You can find more information on our website at <https://www.benhams.com/membership/>



Benham&Reeves



Larkwood Avenue, Blackheath Hill, SE10

£496 per week, £2,150 per month + fees

www.benhams.com

Score	Energy rating	Current	Potential
92+	A		
81-91	B	84 B	84 B
69-80	C		
55-68	D		
39-54	E		
21-38	F		
1-20	G		

London branches open six days a week Mon - Sat

Canary Wharf | City | Colindale | Dartmouth Park | Ealing | Fulham
Hammersmith | Hampstead | Highgate | Hyde Park | Kensington | Kew
Knightsbridge | Nine Elms | Shoreditch | Southall | Surrey Quays
Wapping | Wembley | White City | Woolwich

International offices

China | Hong Kong SAR | India | Indonesia | Qatar | Malaysia | Middle East | Pakistan
Singapore | South Africa | Thailand | Turkey

