



Benham & Reeves

**Williamsburg Plaza, Blackwall, E14**

£404 per week, £1,751 per month + fees

 1 Bedroom    1 Bathroom     
Furnished/UnFurnished

A stylish apartment, with residents' gym and rooftop garden, situated in a highly anticipated development in Canary Wharf. Conveniently located within walking distance from Blackwall DLR station.

Please [click here](#) for full detail

## Property features

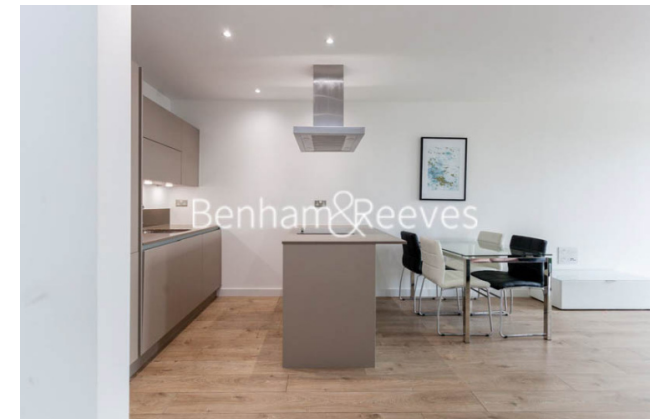
**Modern Apartment | Bespoke bathroom | Brightly lit reception | Open plan kitchen | 24 hr concierge | EPC-B | Large bedroom with fitted wardrobe | Private balcony | Roof top garden | Moments from blackwall dlr station**

For more information about this property, please call our Canary Wharf branch on

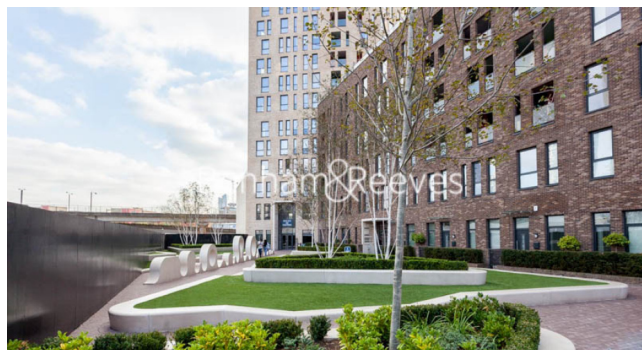
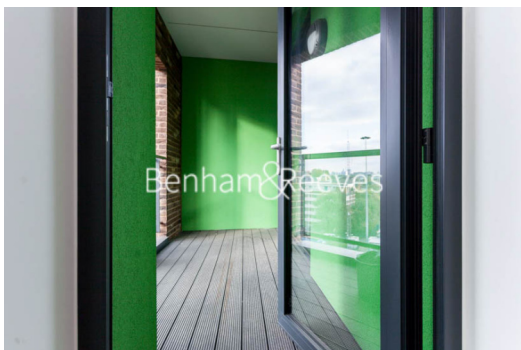
**020 8036 3200**

Redress & Client Money Protection :

Benham and Reeves are members of The Property Ombudsman redress scheme and have Client Money protection with ARLA Propertymark. You can find more information on our website at <https://www.benhams.com/membership/>



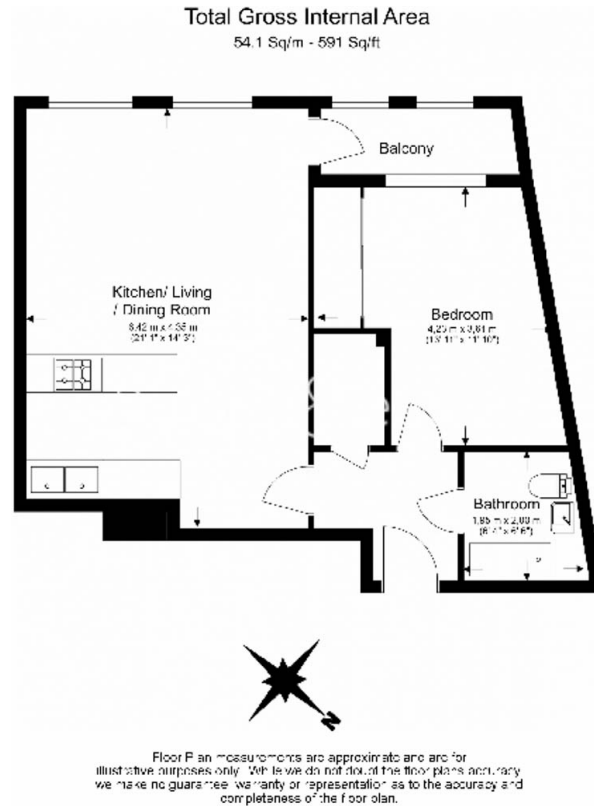
Benham & Reeves



# Williamsburg Plaza, Blackwall, E14

£404 per week, £1,751 per month + fees

www.benhams.com



Energy Efficiency Rating		
	Current	Potential
<i>Very energy efficient - lower running costs</i>		
(92-100) <b>A</b>		
(81-91) <b>B</b>	84	85
(69-80) <b>C</b>		
(55-68) <b>D</b>		
(39-54) <b>E</b>		
(21-38) <b>F</b>		
(1-20) <b>G</b>		
<i>Not energy efficient - higher running costs</i>		
<b>England &amp; Wales</b>	EU Directive 2002/91/EC	

## London branches open six days a week Mon - Sat

Canary Wharf | City | Colindale | Dartmouth Park | Ealing | Fulham  
Hammersmith | Hampstead | Highgate | Hyde Park | Kensington | Kew  
Knightsbridge | Nine Elms | Shoreditch | Southall | Surrey Quays  
Wapping | Wembley | White City | Woolwich

## International offices

China | Hong Kong SAR | India | Indonesia | Qatar | Malaysia | Middle East |  
Singapore | South Africa | Thailand | Turkey



Benham & Reeves