



Benham & Reeves

Proton Tower, Blackwall Way, E14

£439 per week, £1,902 per month + fees

🛏 1 Bedroom 🚿 1 Bathroom 🚗 Furnished

A bright modern apartment set in a popular Riverside development close to the amenities of Canary Wharf. Perfectly located a short walk from both Blackwell and East India DLR station, which provides convenient services into Canary Wharf and the City.

Please [click here](#) for full detail

Property features

One double bedroom | Modern Bathroom | Open Planned Living | Fitted Kitchen | Furnished | EPC-B | Balcony | Ideal for Canary Wharf and the City | East India DLR nearby

For more information about this property, please call our Canary Wharf branch on

020 8036 3200

Redress & Client Money Protection :

Benham and Reeves are members of The Property Ombudsman redress scheme and have Client Money protection with ARLA Propertymark.

You can find more information on our website at <https://www.benhamandreeves.com/membership/>



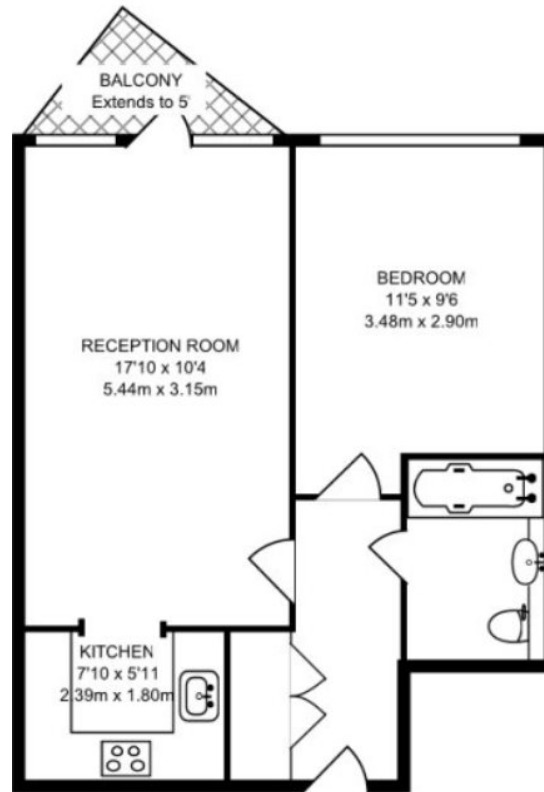
Benham & Reeves



Proton Tower, Blackwall Way, E14

£439 per week, £1,902 per month + fees

www.benhams.com



| Energy Efficiency Rating | | |
|---|-------------------------|-----------|
| | Current | Potential |
| Very energy efficient - lower running costs | | |
| (92-100) A | | |
| (81-91) B | 86 | 87 |
| (69-80) C | | |
| (55-68) D | | |
| (39-54) E | | |
| (21-38) F | | |
| (1-20) G | | |
| Not energy efficient - higher running costs | | |
| England & Wales | EU Directive 2002/91/EC | |

London branches open six days a week Mon - Sat

Canary Wharf | City | Colindale | Dartmouth Park | Ealing | Fulham
Hammersmith | Hampstead | Highgate | Hyde Park | Kensington | Kew
Knightsbridge | Nine Elms | Shoreditch | Southall | Surrey Quays
Wapping | Wembley | White City | Woolwich

International offices

China | Hong Kong SAR | India | Indonesia | Qatar | Malaysia | Middle East | Pakistan
Singapore | South Africa | Thailand | Turkey



Benham & Reeves