



Benham & Reeves

Tavistock Place, Bloomsbury, WC1

£600 per week, £2,600 per month + fees

 2 Bedrooms  1 Bathroom  Furnished

Modern, spacious apartment situated in a secure, gated development in an envious location near to Russell Square Station.

Please [click here](#) for full detail

Property features

Modern One Bedroom Apartment | Family Size Bathroom | Open Plan Reception | Fully equipped kitchen - full size fridge, washing machine | Furnished | EPC-D | Gated and secure development | Storage cupboard in hallway | Excellent location | Nearby The Russell Square station

For more information about this property,
please call our City branch on

020 7213 9700



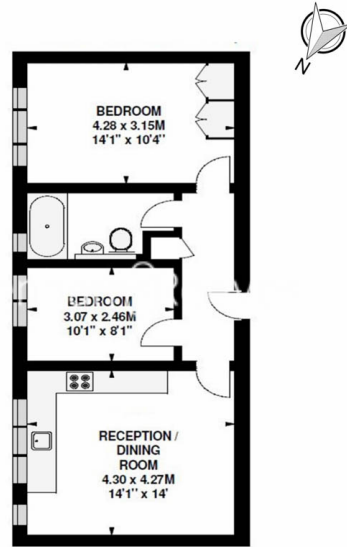


Tavistock Place, Bloomsbury, WC1

£600 per week, £2,600 per month + fees

www.benhams.com

2nd Floor
Approx gross internal area: 570sq/ft - 53sq/m



Whilst every attempt has been made to ensure the accuracy of the floor plan contained here, measurements of doors, windows, rooms and any other items are approximate and no responsibility is taken for any error, omission, or mis-statement. This plan is for illustrative purposes only and should be used as such by any prospective purchaser. The services, systems and appliances shown have not been tested and no guarantee as to their operability or efficiency can be given.
Made with Metropix G2016

Score	Energy rating	Current	Potential
92+	A		
81-91	B		
69-80	C		72 C
55-68	D	58 D	
39-54	E		
21-38	F		
1-20	G		

London branches open six days a week Mon - Sat

Canary Wharf | City | Colindale | Dartmouth Park | Ealing | Fulham
Hammersmith | Hampstead | Highgate | Hyde Park | Kensington | Kew
Knightsbridge | Nine Elms | Shoreditch | Southall | Surrey Quays
Wapping | Wembley | White City | Woolwich

International offices

China | Hong Kong SAR | India | Indonesia | Qatar | Malaysia | Middle East | Pakistan
Singapore | South Africa | Thailand | Turkey



Benham&Reeves