



Benham & Reeves

Theobalds Road, Bloomsbury, WC1X

£577 per week, £2,500 per month + fees

 1 Bedroom  1 Bathroom  Furnished

Elegant apartment situated within a beautiful period building on Theobalds Road located minutes from Chancery Lane, Bloomsbury and short walk from Holborn and Kings Cross.

Please [click here](#) for full detail

Property features

One Bedroom Apartment | Bespoke Bathroom | Open Plan Reception | Fitted Kitchen | Furnished | EPC-B | Lift | Daily Porter | Excellent Transport links Nearby | Nearby Holborn and Kings Cross

For more information about this property,
please call our City branch on

020 7213 9700

Redress & Client Money Protection :

Benham and Reeves are members of The Property Ombudsman redress scheme and have Client Money protection with ARLA Propertymark. You can find more information on our website at <https://www.benhams.com/membership/>



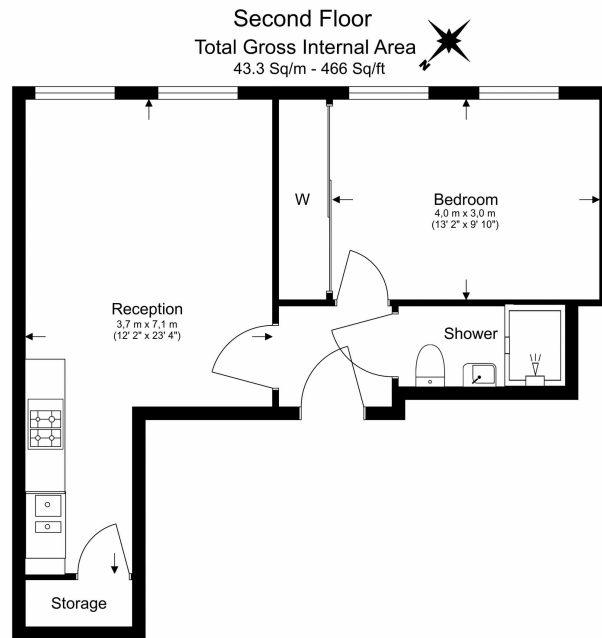
Benham & Reeves



Theobalds Road, Bloomsbury, WC1X

£577 per week, £2,500 per month + fees

www.benhams.com



Floor Plan measurements are approximate and are for illustrative purposes only. While we do not doubt the floor plans accuracy, we make no guarantee, warranty or representation as to the accuracy and completeness of the floor plan.

Energy Efficiency Rating

Very energy efficient - lower running costs

(92 plus) A

(81-91) B

(69-80) C

(55-68) D

(39-54) E

(21-38) F

(1-20) G

Not energy efficient - higher running costs

Current	Potential
76	79

London branches open six days a week Mon - Sat

Canary Wharf | City | Colindale | Dartmouth Park | Ealing | Fulham
Hammersmith | Hampstead | Highgate | Hyde Park | Kensington | Kew
Knightsbridge | Nine Elms | Shoreditch | Southall | Surrey Quays
Wapping | Wembley | White City | Woolwich

International offices

China | Hong Kong SAR | India | Indonesia | Qatar | Malaysia | Middle East | Pakistan
Singapore | South Africa | Thailand | Turkey



Benham & Reeves