



Benham&Reeves

Damac Tower, Bondway, SW8

£800 per week, £3,467 per month + fees

🛏 1 Bedroom 🚿 1 Bathroom 🚗 Furnished

Fashionable 27th floor apartment situated in a sought after development with 5* resident amenities located next to Vauxhall Station

Please [click here](#) for full detail

Property features

One Double bedroom | 27th Floor | Air cooling | Dishwasher | Winter Garden | EPC-B | 24 hour concierge | Swimming pool | Gym | Vauxhall and Nine Elms Stations

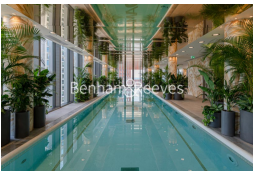
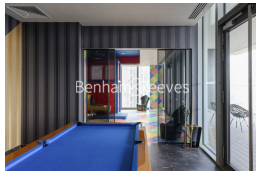
For more information about this property,
please call our Nine Elms branch on

020 3282 3700



Redress & Client Money Protection :
Benham and Reeves are members of The Property Ombudsman redress scheme and have Client Money protection with ARLA Propertymark.
You can find more information on our website at <https://www.benhamandreeves.com/membership/>

Benham&Reeves



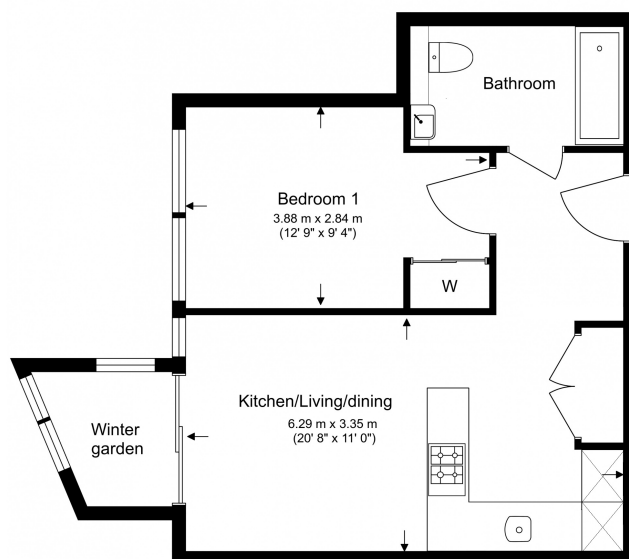
Damac Tower, Bondway, SW8

£800 per week, £3,467 per month + fees


www.benhams.com

Total Gross Internal Area

163.6 Sq/m - 537.7 Sq/ft



Floor Plan measurements are approximate and are for illustrative purposes only. While we do not doubt the floor plans accuracy, we make no guarantee, warranty or representation as to the accuracy and completeness of the floor plan.

Energy Efficiency Rating		
	Current	Potential
Very energy efficient - lower running costs		
(92-100) A	85	85
(81-91) B		
(69-80) C		
(55-68) D		
(39-54) E		
(21-38) F		
(1-20) G		
Not energy efficient - higher running costs		
England & Wales		EU Directive 2002/91/EC 

London branches open six days a week Mon - Sat

Canary Wharf | City | Colindale | Dartmouth Park | Ealing | Fulham
Hammersmith | Hampstead | Highgate | Hyde Park | Kensington | Kew
Knightsbridge | Nine Elms | Shoreditch | Southall | Surrey Quays
Wapping | Wembley | White City | Woolwich

International offices

China | Hong Kong SAR | India | Indonesia | Qatar | Malaysia | Middle East | Pakistan
Singapore | South Africa | Thailand | Turkey



Benham & Reeves