



Benham & Reeves

**Damac tower, Bondway, SW8**

£808 per week, £3,500 per month + fees

 1 Bedroom    1 Bathroom    Furnished

A modern one bedroom apartment located in the sought after Damac Tower.

Please [click here](#) for full detail

## Property features

Furnished | One double bedroom | Winter garden | Air cooling | Dishwasher | EPC-B | 24 hour concierge | Swimming pool | Gym | Nearby Vauxhall Station

For more information about this property,  
please call our Nine Elms branch on

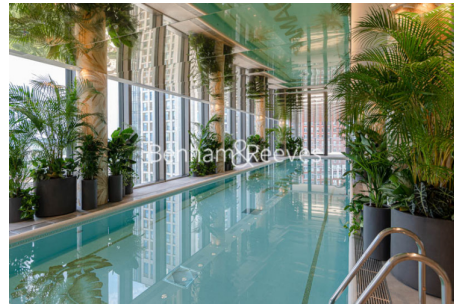
**020 3282 3700**

Redress & Client Money Protection :

Benham and Reeves are members of The Property Ombudsman redress scheme and have Client Money protection with ARLA Propertymark. You can find more information on our website at <https://www.benhams.com/membership/>



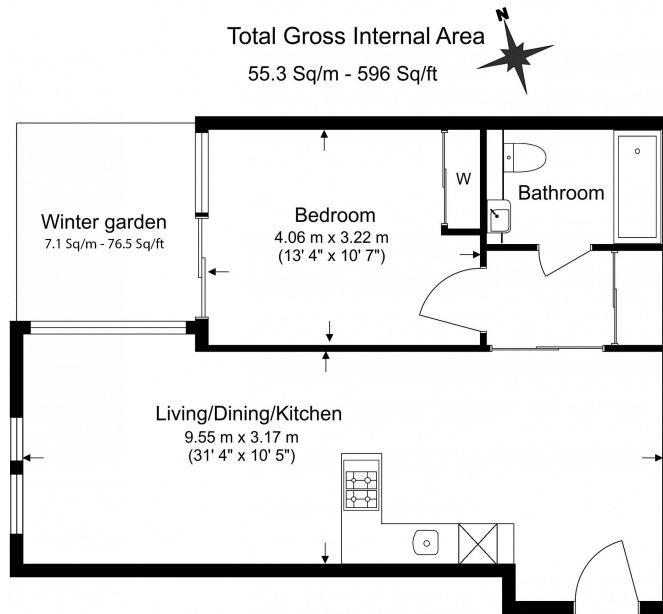
Benham & Reeves



# Damac tower, Bondway, SW8

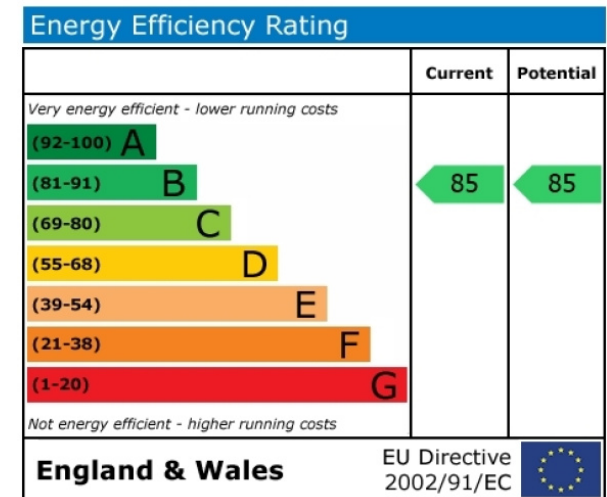
£808 per week, £3,500 per month + fees

www.benhams.com



Benham & Reeves

Floor Plan measurements are approximate and are for illustrative purposes only. While we do not doubt the floor plans accuracy, we make no guarantee, warranty or representation as to the accuracy and completeness of the floor plan.



## London branches open six days a week Mon - Sat

Canary Wharf | City | Colindale | Dartmouth Park | Ealing | Fulham  
Hammersmith | Hampstead | Highgate | Hyde Park | Kensington | Kew  
Knightsbridge | Nine Elms | Shoreditch | Southall | Surrey Quays  
Wapping | Wembley | White City | Woolwich

## International offices

China | Hong Kong SAR | India | Indonesia | Qatar | Malaysia | Middle East |  
Singapore | South Africa | Thailand | Turkey



Benham & Reeves