



Benham & Reeves

Damac Tower, Bondway, SW8

£1,385 per week, £6,000 per month + fees

 3 Bedrooms  3 Bathrooms  Furnished

Large stylish, furnished 17th floor apartment situated in a sought after development, with views of South West London, two minutes from Vauxhall station.

Please [click here](#) for full detail

Property features

Three bedrooms | 17th Floor | Students welcome | Air cooling | Winter Garden | EPC-B | 24 Hour concierge | 5* Facilities | Swimming Pool | Nearby Vauxhall Station

For more information about this property,
please call our Property Management branch on

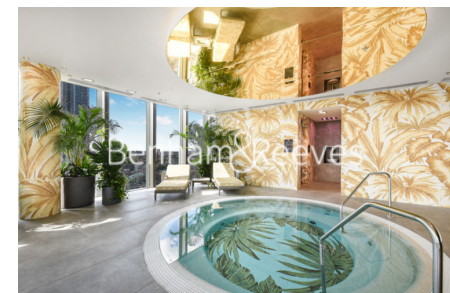
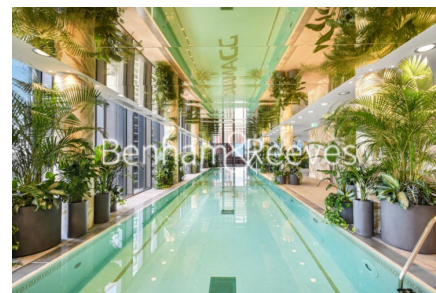
020 7319 9740

Redress & Client Money Protection :

Benham and Reeves are members of The Property Ombudsman redress scheme and have Client Money protection with ARLA Propertymark. You can find more information on our website at <https://www.benhams.com/membership/>



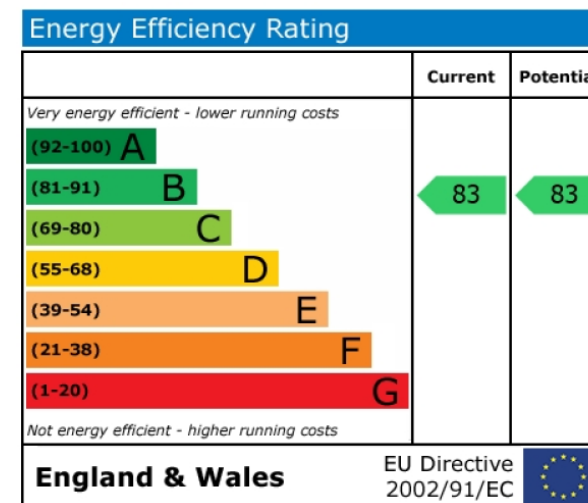
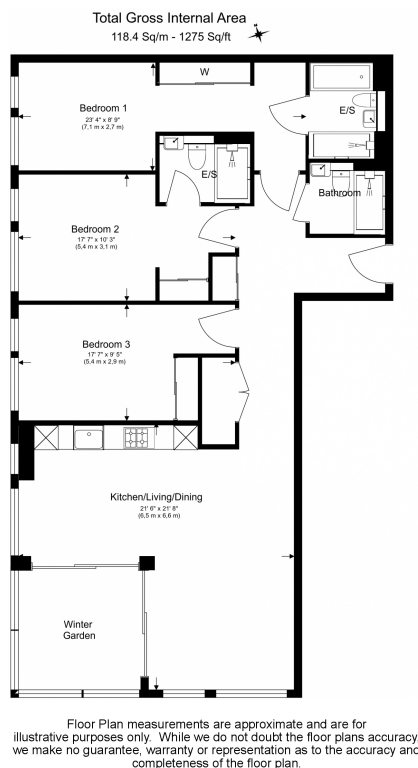
Benham & Reeves



Damac Tower, Bondway, SW8

£1,385 per week, £6,000 per month + fees

www.benhams.com



London branches open six days a week Mon - Sat

Canary Wharf | City | Colindale | Dartmouth Park | Ealing | Fulham
Hammersmith | Hampstead | Highgate | Hyde Park | Kensington | Kew
Knightsbridge | Nine Elms | Shoreditch | Southall | Surrey Quays
Wapping | Wembley | White City | Woolwich

International offices

China | Hong Kong SAR | India | Indonesia | Qatar | Malaysia | Middle East |
Singapore | South Africa | Thailand | Turkey



Benham & Reeves