



Benham&Reeves

## London City Island, Botanic Square, E14

£692 per week, £2,999 per month + fees

 2 Bedrooms    2 Bathrooms    Furnished

A Modern apartment situated in the Grantham House at the highly desirable London City Island development in Canning Town, E14, conveniently located within walking distance from Canning Town Underground and DLR station.

Please [click here](#) for full detail

## Property features

**One Double Bedrooms | Family size bathroom | One Reception | Fitted Kitchen | Insert Furnished | EPC-B | 24 Hour Concierge | Gym and Outdoor Heated Swimming Pool | Nearby Canning Town Underground and DLR**

For more information about this property,  
please call our Canary Wharf branch on

**020 8036 3200**

Redress & Client Money Protection :

Benham and Reeves are members of The Property Ombudsman redress scheme and have Client Money protection with ARLA Propertymark. You can find more information on our website at <https://www.benhamandreeves.com/membership/>



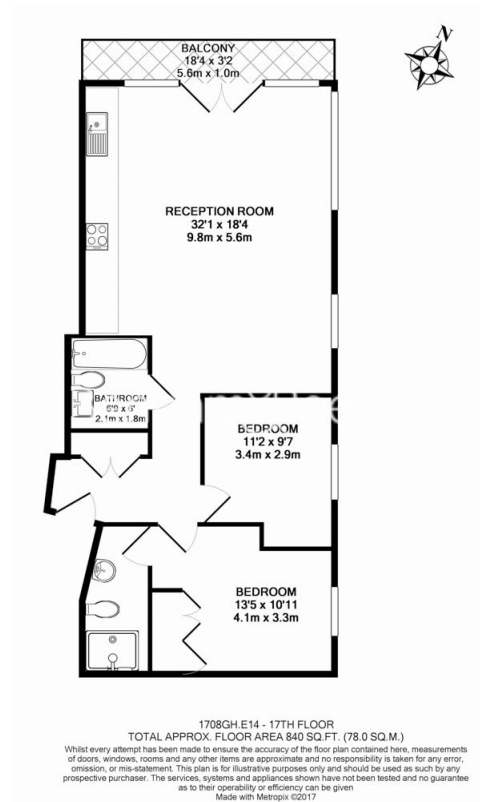
**Benham & Reeves**



# London City Island, Botanic Square, E14

£692 per week, £2,999 per month + fees

www.benhams.com



Energy Efficiency Rating		
	Current	Potential
Very energy efficient - lower running costs		
(92-100) A		
(81-91) B		
(69-80) C		
(55-68) D		
(39-54) E		
(21-38) F		
(1-20) G		
Not energy efficient - higher running costs		
England & Wales	EU Directive 2002/91/EC	

## London branches open six days a week Mon - Sat

Canary Wharf | City | Colindale | Dartmouth Park | Ealing | Fulham  
Hammersmith | Hampstead | Highgate | Hyde Park | Kensington | Kew  
Knightsbridge | Nine Elms | Shoreditch | Southall | Surrey Quays  
Wapping | Wembley | White City | Woolwich

## International offices

China | Hong Kong SAR | India | Indonesia | Qatar | Malaysia | Middle East |  
Singapore | South Africa | Thailand | Turkey



Benham & Reeves