



Benham & Reeves

Kew Bridge, Brentford, TW8

£1,154 per week, £5,001 per month + fees

 3 Bedrooms  3 Bathrooms 
Furnished/UnFurnished

Large well-presented air-conditioned penthouse apartment, with underground parking and direct River views, situated in a desirable riverside development near Kew Botanic Gardens. Ideally located for Kew Bridge station, and with easy access to the A4/M4.

Please [click here](#) for full detail

Property features

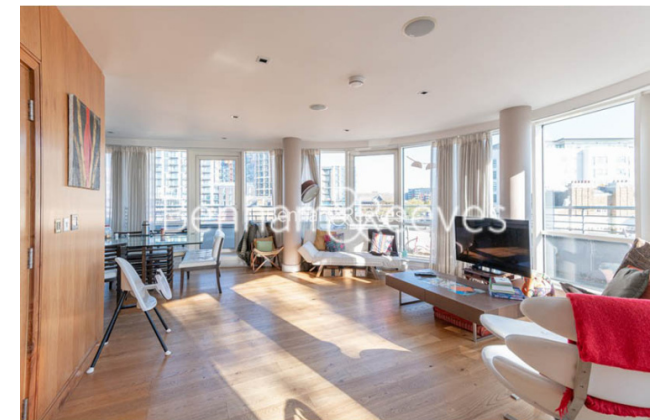
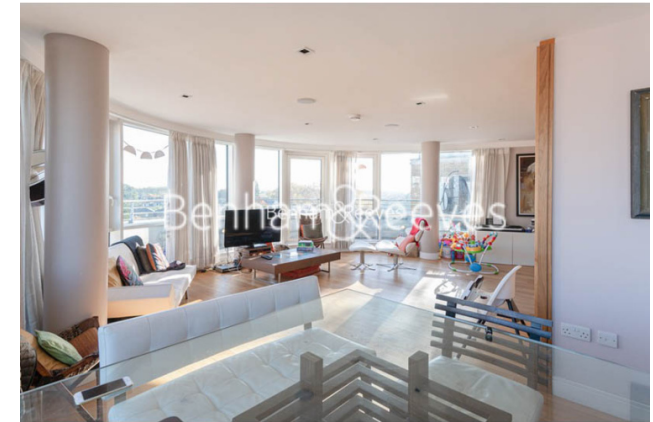
24/7 Concierge | River Views | Wood Flooring | Underground Parking | On-Site Grocery Stores | EPC-C | Air Conditioning | Underfloor Heating | Resident's Gym | Kew Bridge Station

For more information about this property,
please call our Kew branch on

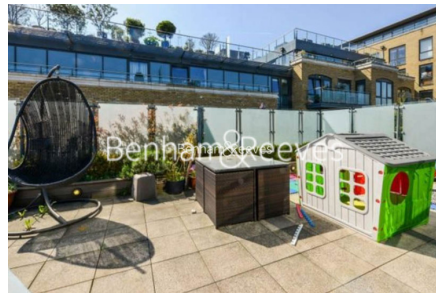
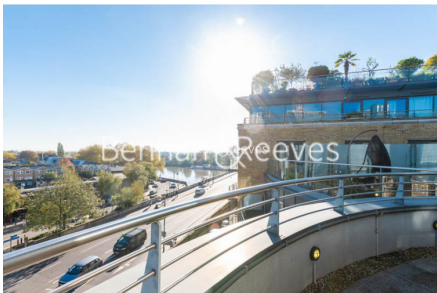
020 8326 1960

Redress & Client Money Protection :

Benham and Reeves are members of The Property Ombudsman redress scheme and have Client Money protection with ARLA Propertymark. You can find more information on our website at <https://www.benhams.com/membership/>



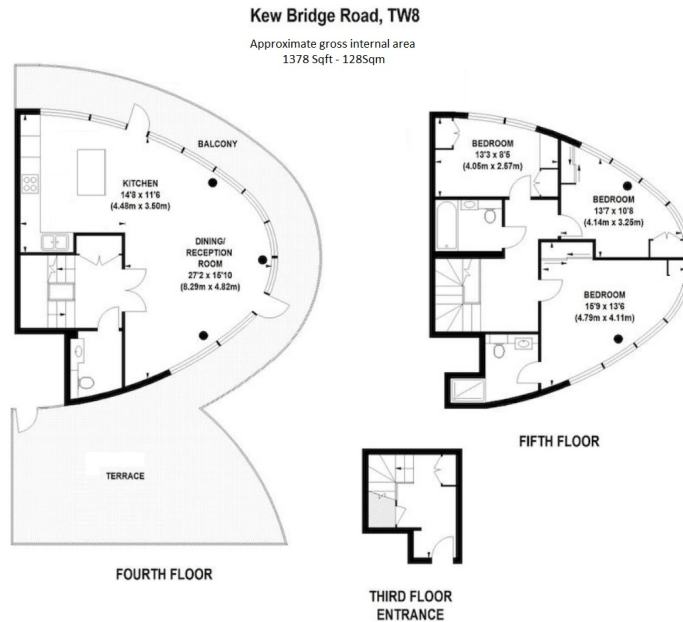
Benham & Reeves



Kew Bridge, Brentford, TW8

£1,154 per week, £5,001 per month + fees

www.benhams.com



Score	Energy rating	Current	Potential
92+	A		
81-91	B		
69-80	C	73 c	74 c
55-68	D		
39-54	E		
21-38	F		
1-20	G		

London branches open six days a week Mon - Sat

Canary Wharf | City | Colindale | Dartmouth Park | Ealing | Fulham
Hammersmith | Hampstead | Highgate | Hyde Park | Kensington | Kew
Knightsbridge | Nine Elms | Shoreditch | Southall | Surrey Quays
Wapping | Wembley | White City | Woolwich

International offices

China | Hong Kong SAR | India | Indonesia | Qatar | Malaysia | Middle East |
Singapore | South Africa | Thailand | Turkey

