



Benham & Reeves

## **Calville House, Brentford, TW8**

£577 per week, £2,500 per month + fees

 Studio  1 Bathroom  Furnished

Stylish, furnished studio apartment, with large private balcony, situated sought after inclusive development in Brentford, with an outside open air pool and close to Brentford Rail Station.

Please [click here](#) for full detail

## Property features

**Studio Apartment | Concierge | Residents Swimming Pool | Co Working Space | Riverside Location | EPC- TBC | Private Balcony | Residents Gym | Close To Brentford Station**

For more information about this property,  
please call our Kew branch on

**020 8326 1960**

Redress & Client Money Protection :

Benham and Reeves are members of The Property Ombudsman redress scheme and have Client Money protection with ARLA Propertymark. You can find more information on our website at <https://www.benhams.com/membership/>



**Benham&Reeves**

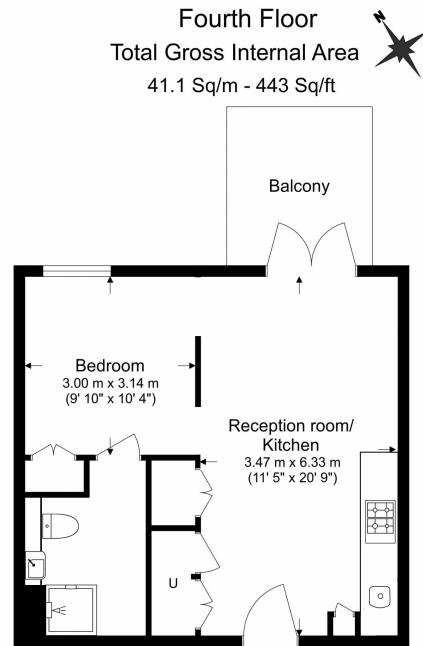




# Calville House, Brentford, TW8

£577 per week, £2,500 per month + fees

[www.benhams.com](http://www.benhams.com)



Benham & Reeves

Floor Plan measurements are approximate and are for illustrative purposes only. While we do not doubt the floor plans accuracy, we make no guarantee, warranty or representation as to the accuracy and completeness of the floor plan.

## London branches open six days a week Mon - Sat

Canary Wharf | City | Colindale | Dartmouth Park | Ealing | Fulham  
Hammersmith | Hampstead | Highgate | Hyde Park | Kensington | Kew  
Knightsbridge | Nine Elms | Shoreditch | Southall | Surrey Quays  
Wapping | Wembley | White City | Woolwich

## International offices

China | Hong Kong SAR | India | Indonesia | Qatar | Malaysia | Middle East | Pakistan  
Singapore | South Africa | Thailand | Turkey



Benham & Reeves