



Benham & Reeves

Pump House Crescent, Brentford, TW8

£450 per week, £1,950 per month + fees

 1 Bedroom  1 Bathroom  Furnished

A bright apartment situated in a sought-after Riverside residential development in a sought-after riverside residential development in Brentford. The development is conveniently positioned nearby good transport links, and the amenities of Kew and Brentford.

Please [click here](#) for full detail

Property features

1 Bedroom | 1 Bathroom | 1 Reception | Fitted Kitchen | Furnished | EPC-C | 24 Hour Concierge, Lift | Underground Parking | Nearby Kew Bridge Station

For more information about this property,
please call our Kew branch on

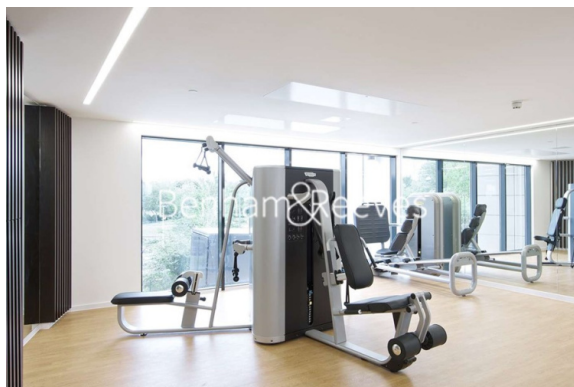
020 8326 1960

Redress & Client Money Protection :

Benham and Reeves are members of The Property Ombudsman redress scheme and have Client Money protection with ARLA Propertymark. You can find more information on our website at <https://www.benhamandreeves.com/membership/>



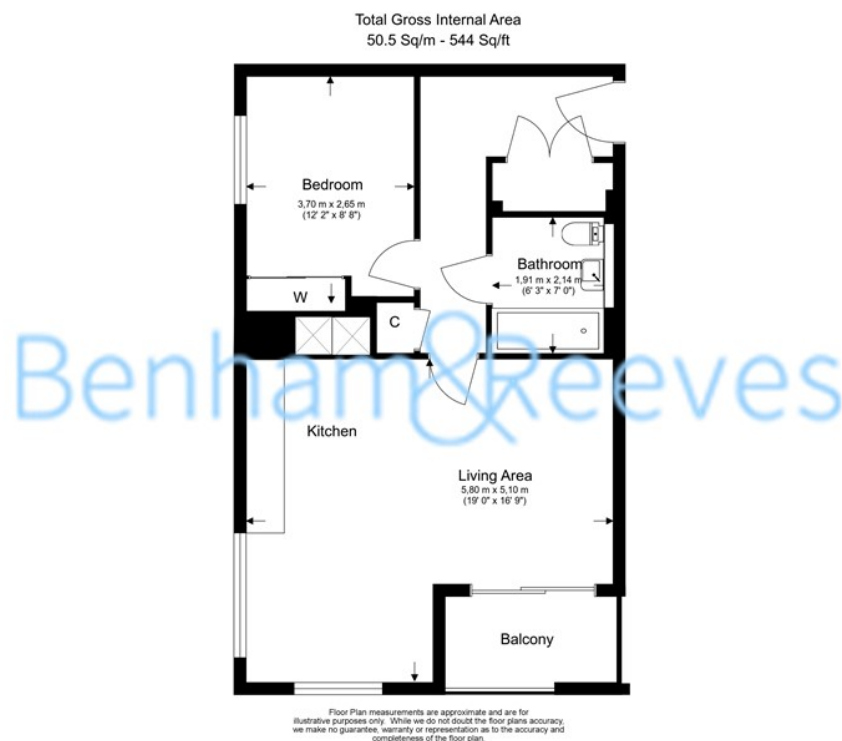
Benham&Reeves



Pump House Crescent, Brentford, TW8

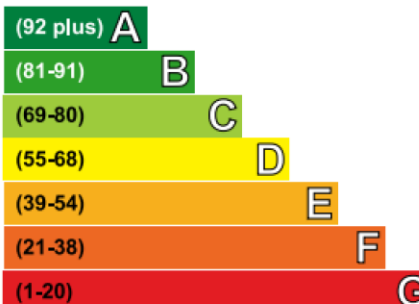
£450 per week, £1,950 per month + fees

www.benhams.com



Energy Efficiency Rating

Very energy efficient - lower running costs



Current	Potential
79	79

Not energy efficient - higher running costs

London branches open six days a week Mon - Sat

Canary Wharf | City | Colindale | Dartmouth Park | Ealing | Fulham
Hammersmith | Hampstead | Highgate | Hyde Park | Kensington | Kew
Knightsbridge | Nine Elms | Shoreditch | Southall | Surrey Quays
Wapping | Wembley | White City | Woolwich

International offices

China | Hong Kong SAR | India | Indonesia | Qatar | Malaysia | Middle East |
Singapore | South Africa | Thailand | Turkey



Benham & Reeves