



Benham & Reeves

St Georges Court, Brompton Road, SW3

£690 per week, £2,990 per month + fees

 1 Bedroom  1 Bathroom  Furnished

A fabulous 667 Sq Ft ONE-BEDROOM apartment on the 4th Floor of ST. GEORGE'S COURT in the heart of SOUTH KENSINGTON. Residents benefit from a DAYTIME PORTER and a vast selection of local shops, restaurants & bars. HEATING & HOT WATER included. SOUTH KENSINGTON UNDERGROUND is a 5 minute walk.

Please [click here](#) for full detail

Property features

1 Bedroom | Daytime Porter | Heating & Hot Water included | Open plan living | Furnished | EPC-D | 667 sq ft | 5 minutes to The Kings Road | 5 minutes to Knightsbridge | South Kensington Station less than 5 minutes

For more information about this property,
please call our Knightsbridge branch on

020 7581 2112

Redress & Client Money Protection :

Benham and Reeves are members of The Property Ombudsman redress scheme and have Client Money protection with ARLA Propertymark. You can find more information on our website at <https://www.benhamandreeves.com/membership/>



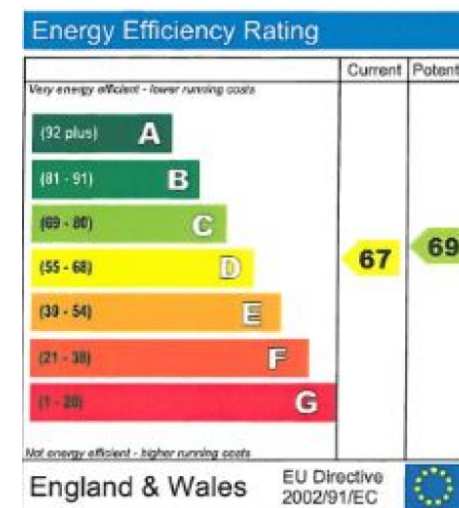
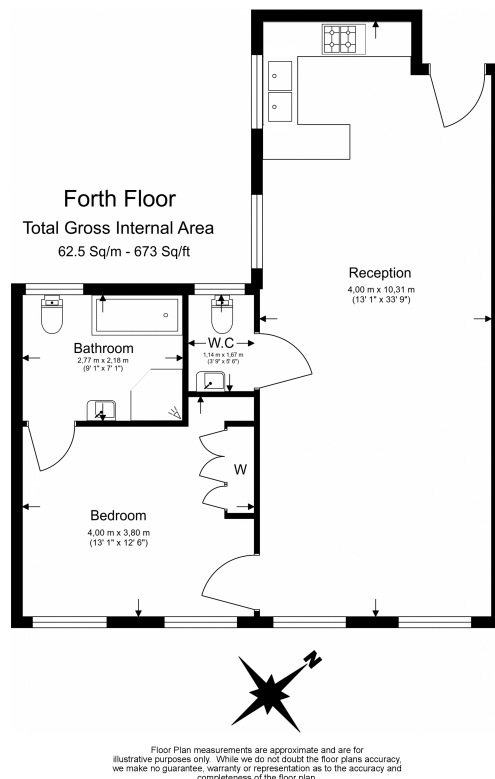
Benham & Reeves



St Georges Court, Brompton Road, SW3

£690 per week, £2,990 per month + fees

www.benhams.com



London branches open six days a week Mon - Sat

Canary Wharf | City | Colindale | Dartmouth Park | Ealing | Fulham
Hammersmith | Hampstead | Highgate | Hyde Park | Kensington | Kew
Knightsbridge | Nine Elms | Shoreditch | Southall | Surrey Quays
Wapping | Wembley | White City | Woolwich

International offices

China | Hong Kong SAR | India | Indonesia | Qatar | Malaysia | Middle East | Pakistan
Singapore | South Africa | Thailand | Turkey



Benham & Reeves