



Benham & Reeves

Needleman Street, Canada Water, SE16

£508 per week, £2,201 per month + fees

 1 Bedroom  1 Bathroom  Furnished

This modern 1st floor apartment is situated in a sought-after development, moments from Canada Water Underground station (Jubilee Line) - Zone 2.

Please [click here](#) for full detail

Property features

One Bedroom Apartment | One Bathroom | Integrated Kitchen Appliances | Furnished | Access To Residential Gym | EPC-B | Private Balcony | 24 Hour Dedicated Concierge | Local Cafes, Bars, Restaurants and Groceries Short Walk Away | Moments from Canada Water Station (Jubilee Line)

For more information about this property, please call our Surrey Quays branch on

020 7740 3050



Redress & Client Money Protection :
Benham and Reeves are members of The Property Ombudsman redress scheme and have Client Money protection with ARLA Propertymark.
You can find more information on our website at <https://www.benhamandreeves.com/membership/>

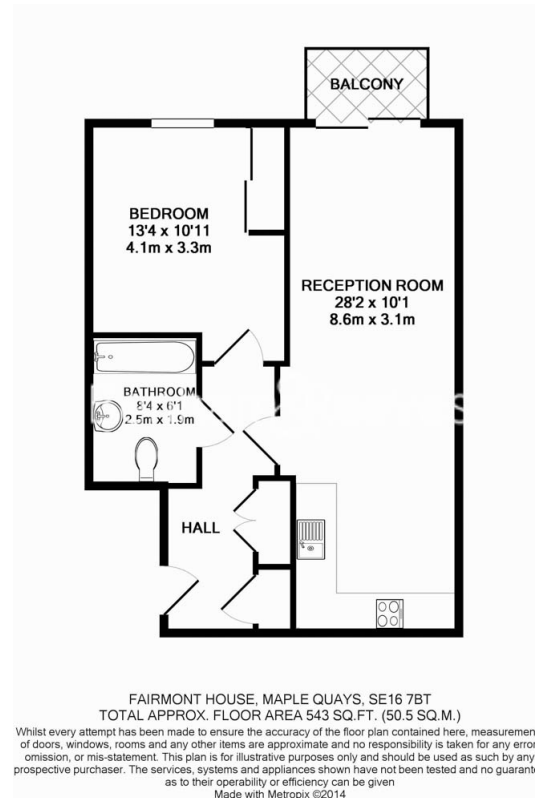
Benham & Reeves



Needleman Street, Canada Water, SE16

£508 per week, £2,201 per month + fees

www.benhams.com



London branches open six days a week Mon - Sat

Canary Wharf | City | Colindale | Dartmouth Park | Ealing | Fulham
Hammersmith | Hampstead | Highgate | Hyde Park | Kensington | Kew
Knightsbridge | Nine Elms | Shoreditch | Southall | Surrey Quays
Wapping | Wembley | White City | Woolwich

International offices

China | Hong Kong SAR | India | Indonesia | Qatar | Malaysia | Middle East | Pakistan
Singapore | South Africa | Thailand | Turkey



Benham & Reeves