



Benham & Reeves

Indecon Square, Canary Wharf, E14

£462 per week, £2,002 per month + fees

 1 Bedroom  1 Bathroom  Furnished

A modern 10th floor apartment, with 24-hour concierge, close to Canary Wharf and The City. Conveniently located near South Quay DLR.

Please [click here](#) for full detail

Property features

Large Double Bedroom | Family- size bathroom | Open-plan Livingroom | Fitted Kitchen | Modern Furnishing | EPC-B | 24 Hour Concierge | Private balcony | Walking distance to Cananary Wharf | Nearby South Quay DLR station

For more information about this property,
please call our Canary Wharf branch on

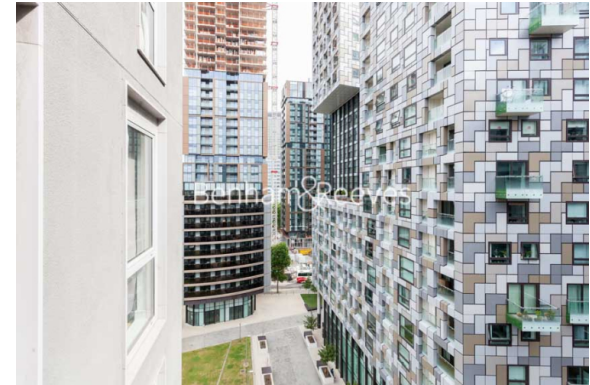
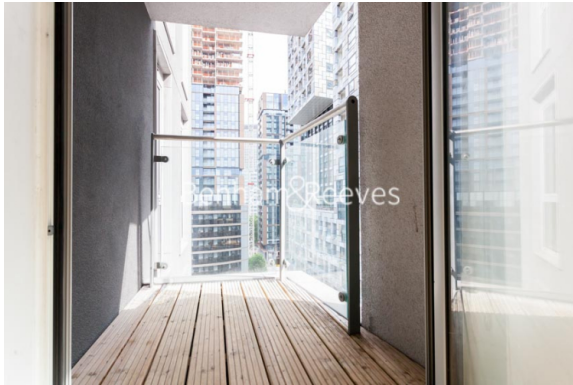
020 8036 3200

Redress & Client Money Protection :

Benham and Reeves are members of The Property Ombudsman redress scheme and have Client Money protection with ARLA Propertymark. You can find more information on our website at <https://www.benhams.com/membership/>



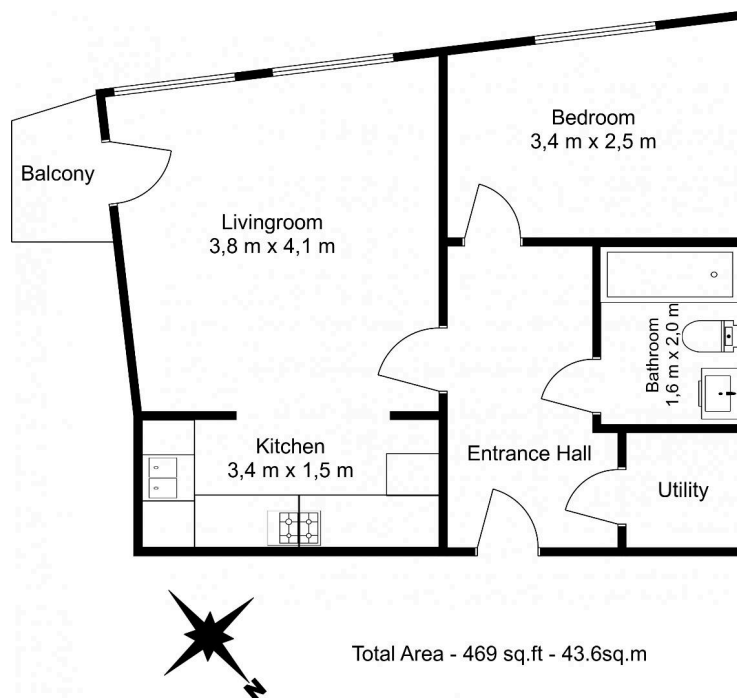
Benham & Reeves



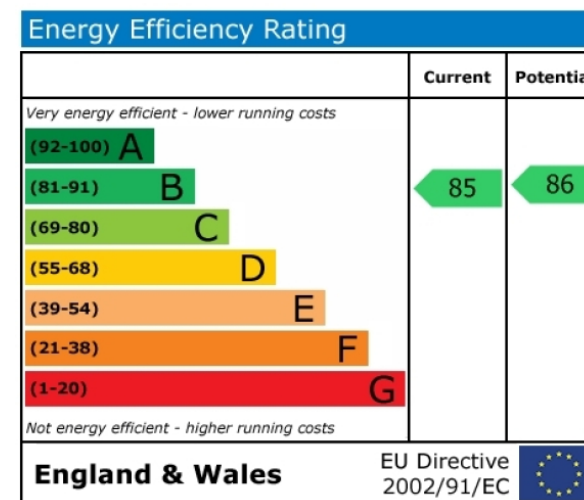
Indescon Square, Canary Wharf, E14

£462 per week, £2,002 per month + fees

www.benhams.com



Floor Plan measurements are approximate and are for illustrative purposes only. While we do not doubt the floor plans accuracy, we make no guarantee, warranty or representation as to the accuracy and completeness of the floor plan.



London branches open six days a week Mon - Sat

Canary Wharf | City | Colindale | Dartmouth Park | Ealing | Fulham
Hammersmith | Hampstead | Highgate | Hyde Park | Kensington | Kew
Knightsbridge | Nine Elms | Shoreditch | Southall | Surrey Quays
Wapping | Wembley | White City | Woolwich

International offices

China | Hong Kong SAR | India | Israel | Malaysia | Middle East | Pakistan
Qatar | Singapore | South Africa | Thailand | Turkey



Benham & Reeves