



Benham & Reeves

## **Fountain House, Imperial Wharf, SW6**

£750 per week, £3,250 per month + fees

 2 Bedrooms    2 Bathrooms    Furnished

Modern 5th floor apartment, with exclusive residents' gym, situated in a vibrant Riverside development built on the North Bank of the River, close to the amenities of Chelsea and Kings Road. Imperial Wharf station is within easy walking distance.

Please [click here](#) for full detail

## Property features

**2 bedrooms | 2 bathrooms | Wooden flooring | River views | Balcony | EPC-B | Comfort cooling | 24hour concierge | Phone line and internet included | Nearby Imperial Wharf Station**

For more information about this property,  
please call our Fulham branch on

**020 7348 7620**

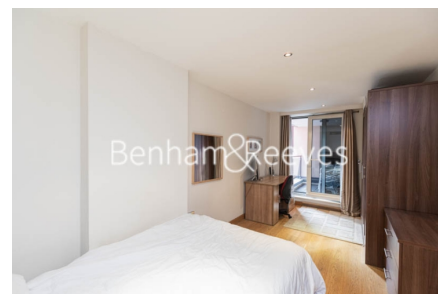
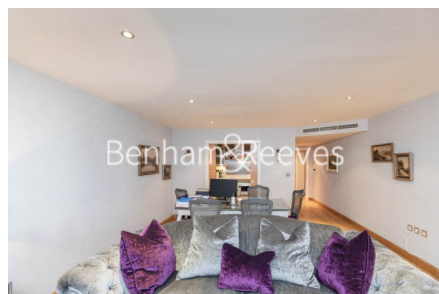
Redress & Client Money Protection :

Benham and Reeves are members of The Property Ombudsman redress scheme and have Client Money protection with ARLA Propertymark. You can find more information on our website at <https://www.benhamandreeves.com/membership/>



**Benham & Reeves**





# Fountain House, Imperial Wharf, SW6

£750 per week, £3,250 per month + fees

www.benhams.com



Floor Plan measurements are approximate and are for illustrative purposes only. While we do not doubt the floor plans accuracy we make no guarantee, warranty or representation as to the accuracy and completeness of the floor plan.

Score	Energy rating	Current	Potential
92+	A		
81-91	B	81   B	84   B
69-80	C		
55-68	D		
39-54	E		
21-38	F		
1-20	G		

## London branches open six days a week Mon - Sat

Canary Wharf | City | Colindale | Dartmouth Park | Ealing | Fulham  
Hammersmith | Hampstead | Highgate | Hyde Park | Kensington | Kew  
Knightsbridge | Nine Elms | Shoreditch | Southall | Surrey Quays  
Wapping | Wembley | White City | Woolwich

## International offices

China | Hong Kong SAR | India | Israel | Malaysia | Middle East | Pakistan  
Qatar | Singapore | South Africa | Thailand | Turkey



Benham & Reeves