



Benham & Reeves

Dollar bay point, Canary wharf, E14

£808 per week, £3,501 per month + fees

 2 Bedrooms  2 Bathrooms  Furnished

A MODERN two-bedroom apartment located at DOLLAR BAY. This property is offered on a FURNISHED basis and benefits from STUNNING VIEWS, 24-HOUR CONCIERGE service, a GYM and is within WALKING DISTANCE of Canary Wharf and all it has to offer.

Please [click here](#) for full detail

Property features

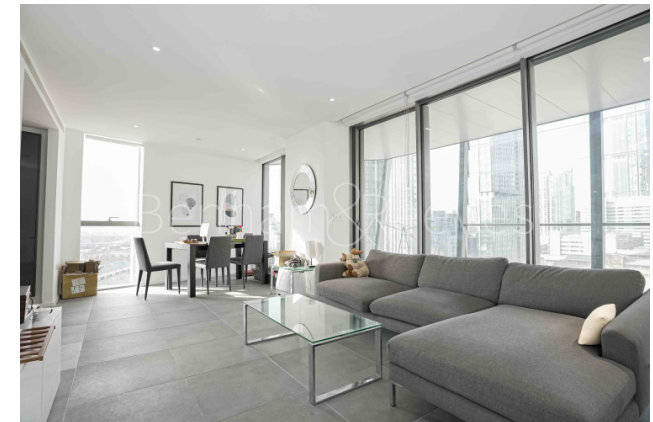
Two large double Bedroom | Brightly Lit Reception with Dock Views | Two Bathroom | Fitted Kitchen | Furnished | EPC-B | Lift | Residents Gym | Winter garden | Near South Quay DLR & Canary Wharf station

For more information about this property, please call our Canary Wharf branch on

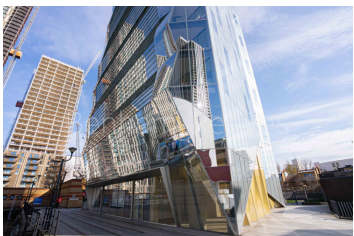
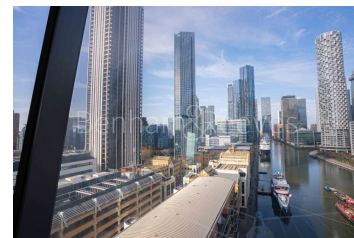
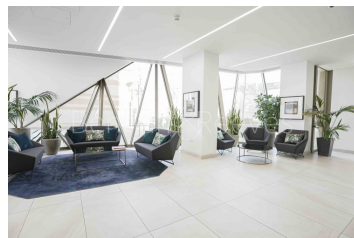
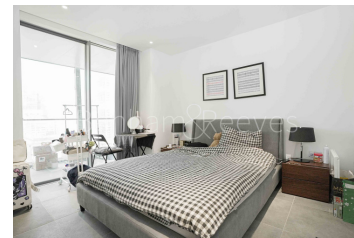
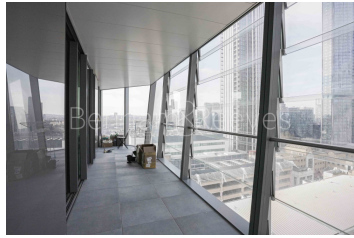
020 8036 3200

Redress & Client Money Protection :

Benham and Reeves are members of The Property Ombudsman redress scheme and have Client Money protection with ARLA Propertymark. You can find more information on our website at <https://www.benhams.com/membership/>



Benham & Reeves



Dollar bay point, Canary wharf, E14

£808 per week, £3,501 per month + fees

www.benhams.com



Benham & Reeves

Floor Plan measurements are approximate and are for illustrative purposes only. While we do not doubt the floor plans accuracy, we make no guarantee, warranty or representation as to the accuracy and completeness of the floor plan.

Score	Energy rating	Current	Potential
92+	A		
81-91	B	82 B	82 B
69-80	C		
55-68	D		
39-54	E		
21-38	F		
1-20	G		

London branches open six days a week Mon - Sat

Canary Wharf | City | Colindale | Dartmouth Park | Ealing | Fulham
Hammersmith | Hampstead | Highgate | Hyde Park | Kensington | Kew
Knightsbridge | Nine Elms | Shoreditch | Southall | Surrey Quays
Wapping | Wembley | White City | Woolwich

International offices

China | Hong Kong SAR | India | Indonesia | Qatar | Malaysia | Middle East | Pakistan
Singapore | South Africa | Thailand | Turkey



Benham & Reeves