



Benham & Reeves

Province Square, Canary Wharf, E14

£595 per week, £2,578 per month + fees

 2 Bedrooms  2 Bathrooms  Furnished

Modern 18th floor apartment with lift access set in a sought-after tower development in the Blackwall area, Canary Wharf. Ideally located within walking distance of Blackwall DLR station which has direct trains to Bank Station.

Please [click here](#) for full detail

Property features

Two Double Bedrooms | Two Bathrooms | Open Planned Living room | Furnished | Fitted Kitchen | EPC-C | Balcony | Views of Canary Wharf | Porter | Blackwall DLR Station

For more information about this property,
please call our Canary Wharf branch on

020 8036 3200

Redress & Client Money Protection :

Benham and Reeves are members of The Property Ombudsman redress scheme and have Client Money protection with ARLA Propertymark. You can find more information on our website at <https://www.benhamandreeves.com/membership/>



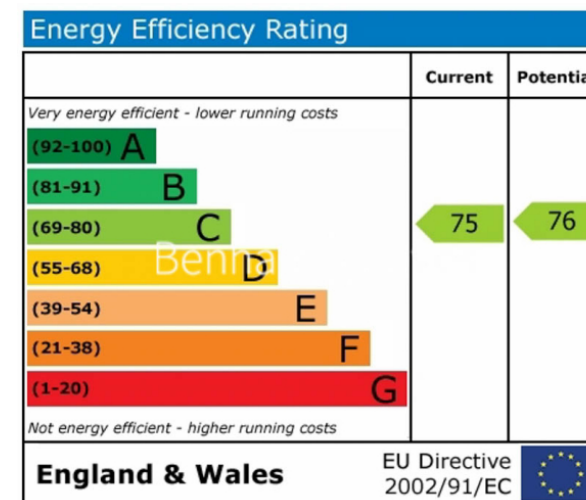
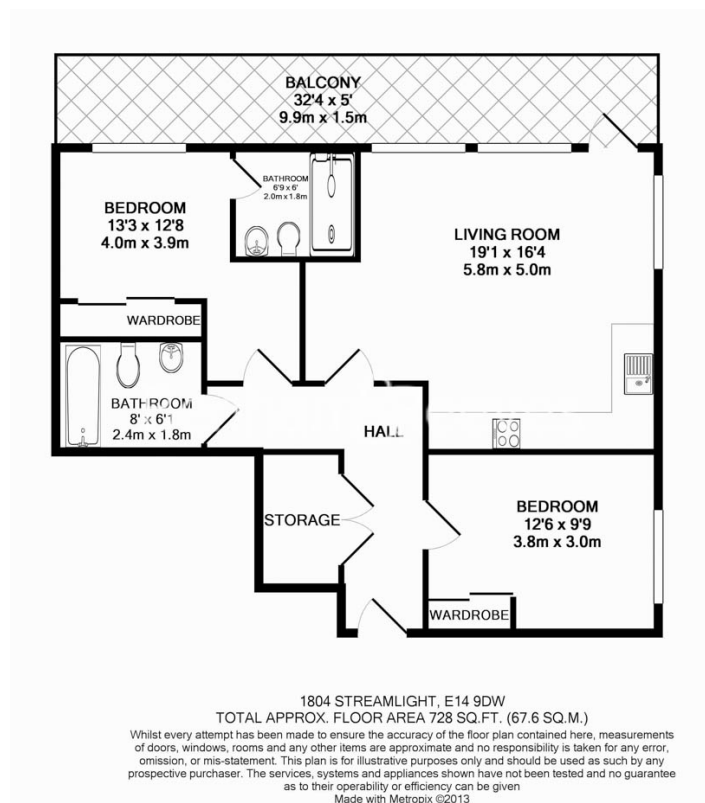
Benham & Reeves



Province Square, Canary Wharf, E14

£595 per week, £2,578 per month + fees

www.benhams.com



London branches open six days a week Mon - Sat

Canary Wharf | City | Colindale | Dartmouth Park | Ealing | Fulham
Hammersmith | Hampstead | Highgate | Hyde Park | Kensington | Kew
Knightsbridge | Nine Elms | Shoreditch | Southall | Surrey Quays
Wapping | Wembley | White City | Woolwich

International offices

China | Hong Kong SAR | India | Indonesia | Qatar | Malaysia | Middle East | Pakistan
Singapore | South Africa | Thailand | Turkey



Benham & Reeves