



Benham & Reeves

Biscayne Avenue, Canary Wharf, E14

£531 per week, £2,300 per month + fees

 1 Bedroom  1 Bathroom  Furnished

Stunning 17th floor apartment with breath-taking views, situated in a sophisticatedly designed 43 story high development, with a host of superb amenities including a sky bar on the top of the building. Located South of Canary Wharf, with Canary Wharf Underground and Blackwall DLR Station offering good transport links and easy access to London City Airport.

Please [click here](#) for full detail

Property features

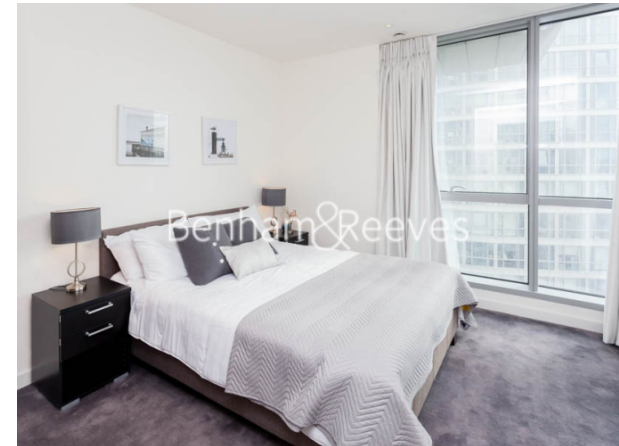
One Bedroom | One Bathroom | Open Planned Living Space | Furnished | Fitted Kitchen | EPC-C | Private Balcony | 24 Hour Concierge | Residents' Health Club | Nearby Blackwall DLR Station

For more information about this property, please call our Canary Wharf branch on

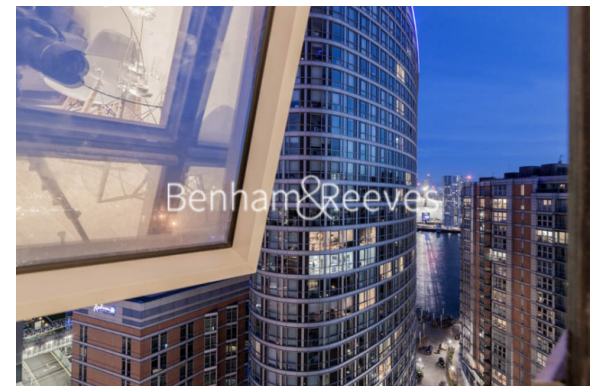
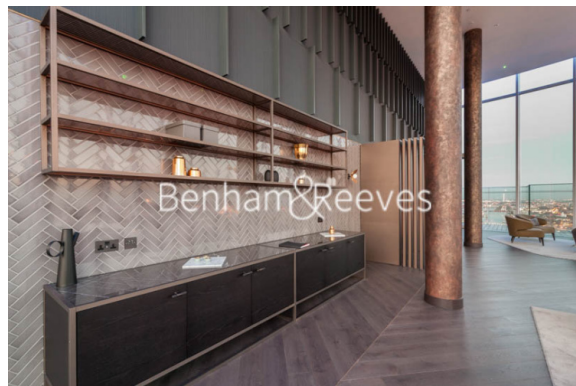
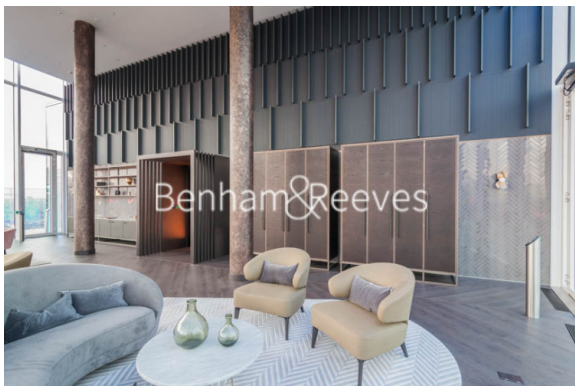
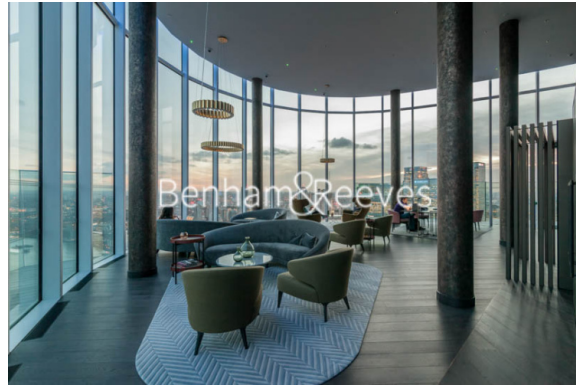
020 8036 3200

Redress & Client Money Protection :

Benham and Reeves are members of The Property Ombudsman redress scheme and have Client Money protection with ARLA Propertymark. You can find more information on our website at <https://www.benhams.com/membership/>



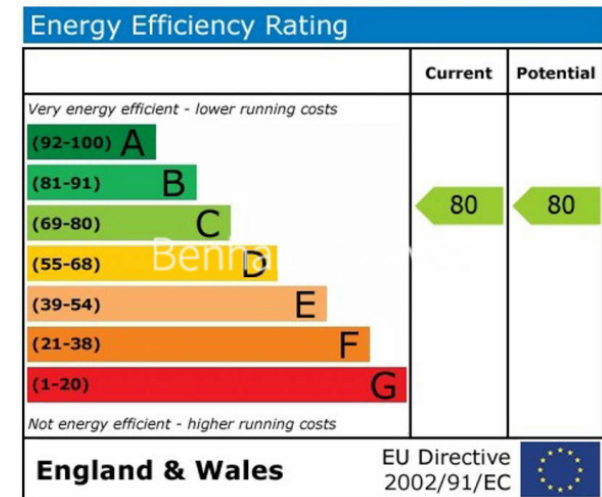
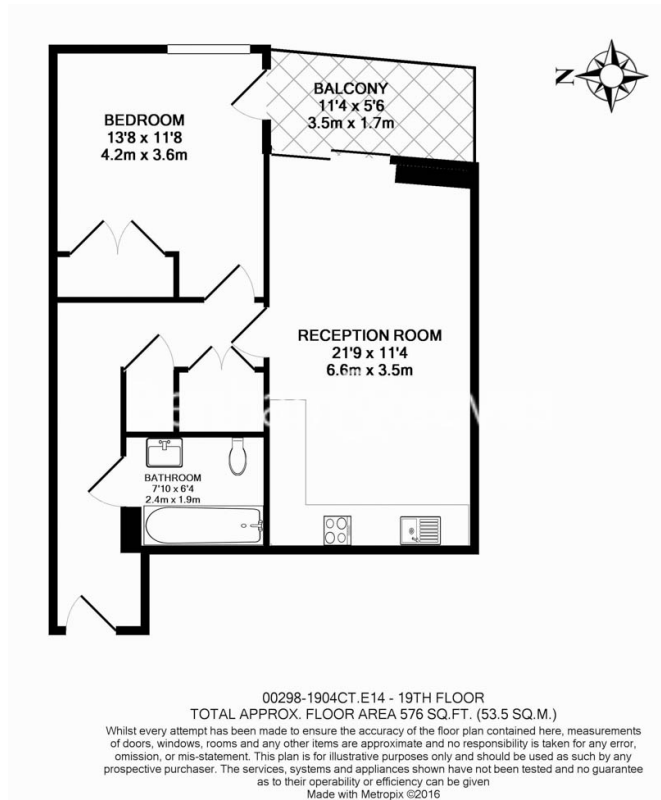
Benham & Reeves



Biscayne Avenue, Canary Wharf, E14

£531 per week, £2,300 per month + fees

www.benhams.com



London branches open six days a week Mon - Sat

Canary Wharf | City | Colindale | Dartmouth Park | Ealing | Fulham
Hammersmith | Hampstead | Highgate | Hyde Park | Kensington | Kew
Knightsbridge | Nine Elms | Shoreditch | Southall | Surrey Quays
Wapping | Wembley | White City | Woolwich

International offices

China | Hong Kong SAR | India | Indonesia | Qatar | Malaysia | Middle East |
Singapore | South Africa | Thailand | Turkey



Benham & Reeves