



Benham & Reeves

Williamsburg Plaza, Canary Wharf, E14

£496 per week, £2,150 per month + fees

 1 Bedroom  1 Bathroom  Furnished

Modern, stylish apartment situated in a desirable development with rooftop garden and good amenities. Conveniently located within walking distance from Blackwall DLR station.

Please [click here](#) for full detail

Property features

One Bedroom | Brightly Lit Reception With Spectacular Views | 24-Hr Concierge | Fully Fitted Kitchen | Large Double Bedroom | EPC-B | Residents Gym | Private Balcony | Roof top garden | Moments from Blackwall DLR Station

For more information about this property,
please call our Canary Wharf branch on

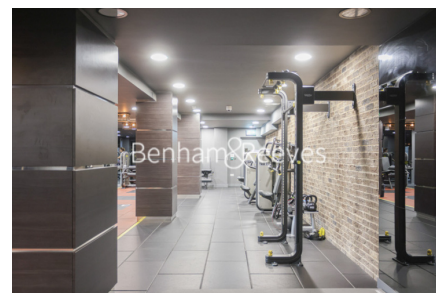
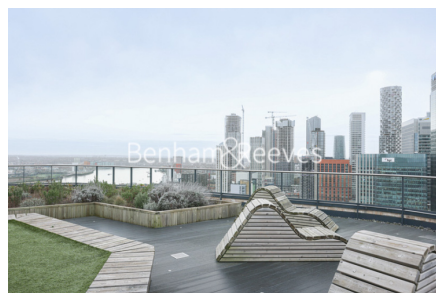
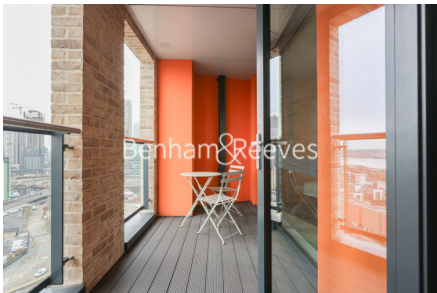
020 8036 3200

Redress & Client Money Protection :

Benham and Reeves are members of The Property Ombudsman redress scheme and have Client Money protection with ARLA Propertymark. You can find more information on our website at <https://www.benhamandreeves.com/membership/>



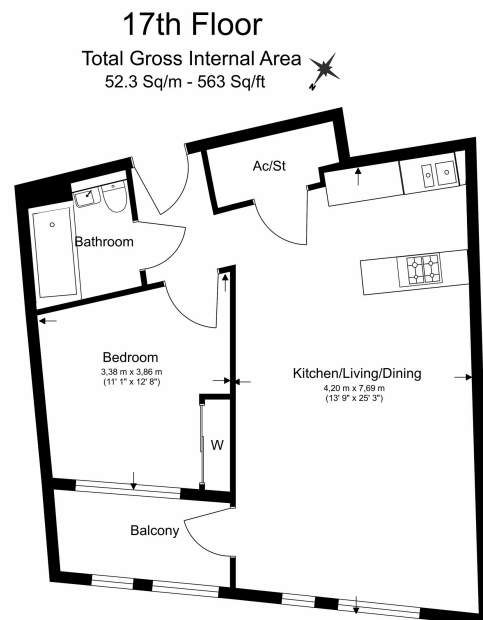
Benham&Reeves



Williamsburg Plaza, Canary Wharf, E14

£496 per week, £2,150 per month + fees

www.benhams.com



Floor Plan measurements are approximate and are for illustrative purposes only. While we do not doubt the floor plans accuracy, we make no guarantee, warranty or representation as to the accuracy and completeness of the floor plan.

Score	Energy rating	Current	Potential
92+	A		
81-91	B	84 B	84 B
69-80	C		
55-68	D		
39-54	E		
21-38	F		
1-20	G		

London branches open six days a week Mon - Sat

Canary Wharf | City | Colindale | Dartmouth Park | Ealing | Fulham
Hammersmith | Hampstead | Highgate | Hyde Park | Kensington | Kew
Knightsbridge | Nine Elms | Shoreditch | Southall | Surrey Quays
Wapping | Wembley | White City | Woolwich

International offices

China | Hong Kong SAR | India | Indonesia | Qatar | Malaysia | Middle East |
Singapore | South Africa | Thailand | Turkey



Benham & Reeves