



Benham & Reeves

## **Pan Peninsula Square, Canary Wharf, E14**

£439 per week, £1,902 per month + fees

 Studio  1 Bathroom  Furnished

Modern 33rd floor studio apartment offered on a fully furnished basis and benefiting from 24-hour concierge service, 5 \* Health Club and is within walking distance of the amenities of Canary Wharf

Please [click here](#) for full detail

## Property features

**Studio Apartment | Shower Room | Open Planned | Furnished | Fitted Kitchen | EPC-B | Balcony | 24 Hour Concierge | 5\* Health Club | South Quay DLR station**

For more information about this property,  
please call our Canary Wharf branch on

**020 8036 3200**

Redress & Client Money Protection :

Benham and Reeves are members of The Property Ombudsman redress scheme and have Client Money protection with ARLA Propertymark. You can find more information on our website at <https://www.benhams.com/membership/>



Benham & Reeves

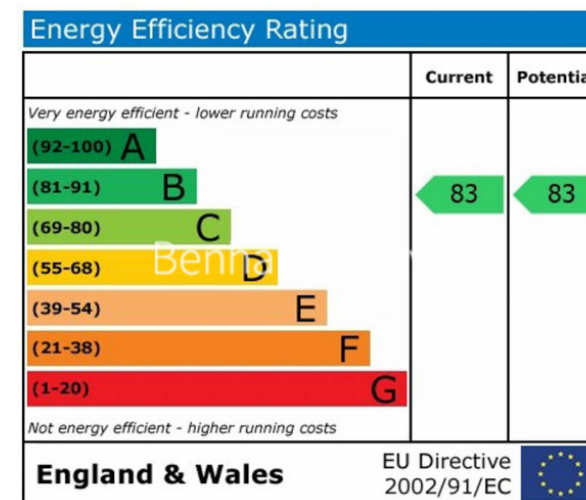
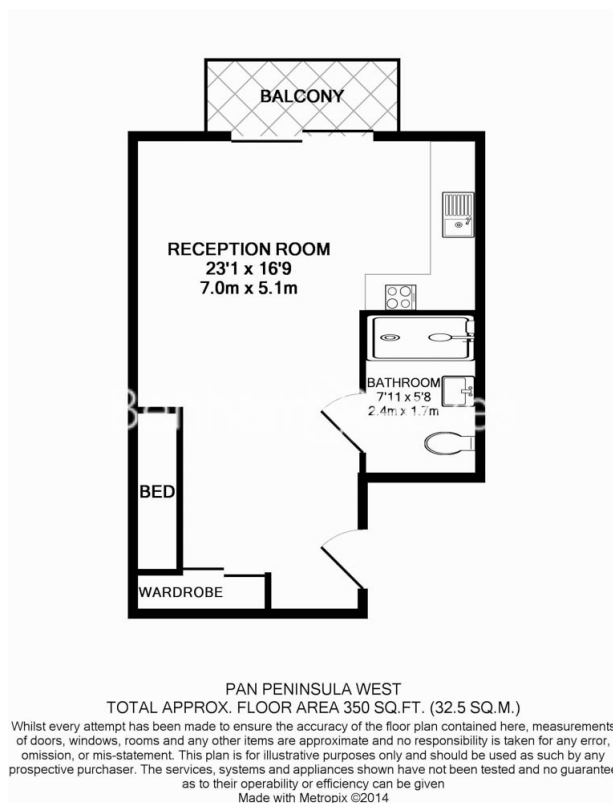




# Pan Peninsula Square, Canary Wharf, E14

£439 per week, £1,902 per month + fees

[www.benhams.com](http://www.benhams.com)



## London branches open six days a week Mon - Sat

Canary Wharf | City | Colindale | Dartmouth Park | Ealing | Fulham  
Hammersmith | Hampstead | Highgate | Hyde Park | Kensington | Kew  
Knightsbridge | Nine Elms | Shoreditch | Southall | Surrey Quays  
Wapping | Wembley | White City | Woolwich

## International offices

China | Hong Kong SAR | India | Indonesia | Qatar | Malaysia | Middle East | Pakistan  
Singapore | South Africa | Thailand | Turkey



Benham & Reeves