



Benham & Reeves

## Indescon Square, Canary Wharf, E14

£508 per week, £2,200 per month + fees

 1 Bedroom    1 Bathroom    Furnished

A modern 10th floor apartment, with 24-hour concierge, close to Canary Wharf and The City. Conveniently located near South Quay DLR.

Please [click here](#) for full detail

## Property features

**One Double Bedroom | One Bathroom | Private balcony | Furnished | Fitted Kitchen | EPC-B | Concierge | Waling distance to canary wharf station | Nearby South Quay DLR station**

For more information about this property,  
please call our Canary Wharf branch on

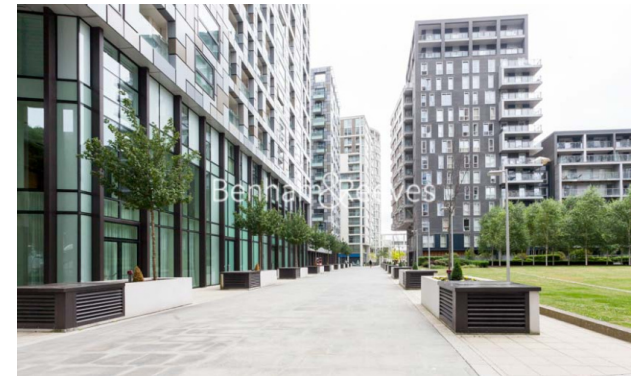
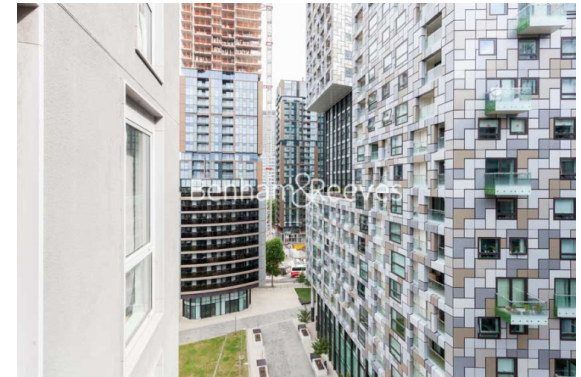
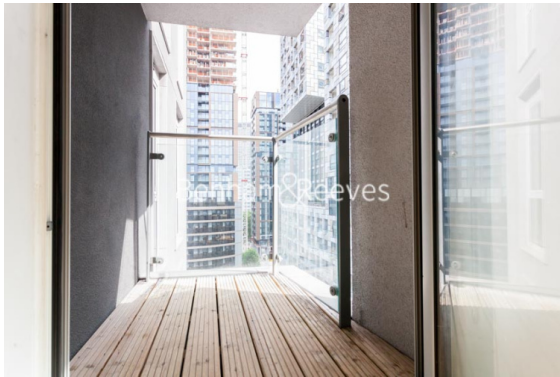
**020 8036 3200**



Redress & Client Money Protection :  
Benham and Reeves are members of The Property Ombudsman redress scheme and have Client Money protection with ARLA Propertymark.  
You can find more information on our website at <https://www.benhams.com/membership/>

**Benham & Reeves**

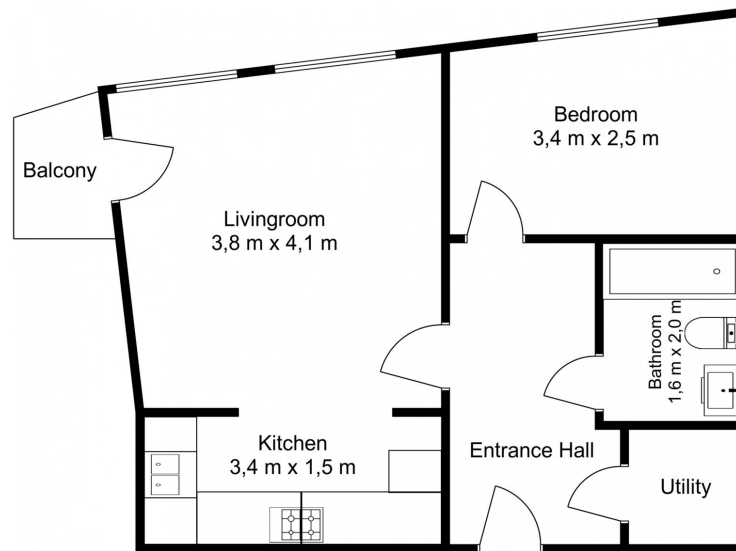




# Indescon Square, Canary Wharf, E14

£508 per week, £2,200 per month + fees

www.benhams.com



Total Area - 469 sq.ft - 43.6sq.m

Floor Plan measurements are approximate and are for illustrative purposes only. While we do not doubt the floor plans accuracy, we make no guarantee, warranty or representation as to the accuracy and completeness of the floor plan.

Energy Efficiency Rating		
	Current	Potential
Very energy efficient - lower running costs		
(92-100) A		
(81-91) B	85	86
(69-80) C		
(55-68) D		
(39-54) E		
(21-38) F		
(1-20) G		
Not energy efficient - higher running costs		
England & Wales	EU Directive 2002/91/EC	

## London branches open six days a week Mon - Sat

Canary Wharf | City | Colindale | Dartmouth Park | Ealing | Fulham  
Hammersmith | Hampstead | Highgate | Hyde Park | Kensington | Kew  
Knightsbridge | Nine Elms | Shoreditch | Southall | Surrey Quays  
Wapping | Wembley | White City | Woolwich

## International offices

China | Hong Kong SAR | India | Indonesia | Qatar | Malaysia | Middle East |  
Singapore | South Africa | Thailand | Turkey



Benham & Reeves