



Benham & Reeves

Williamsburg Plaza ,Canary Wharf, E14

£612 per week, £2,652 per month + fees

🛏 2 Bedrooms 🚿 2 Bathrooms 🛋 Furnished

A smart modern apartment with concierge and resident gym facilities perfectly located for sharers working in Canary Wharf or The City of London with DLR links a short walk away.

Please [click here](#) for full detail

Property features

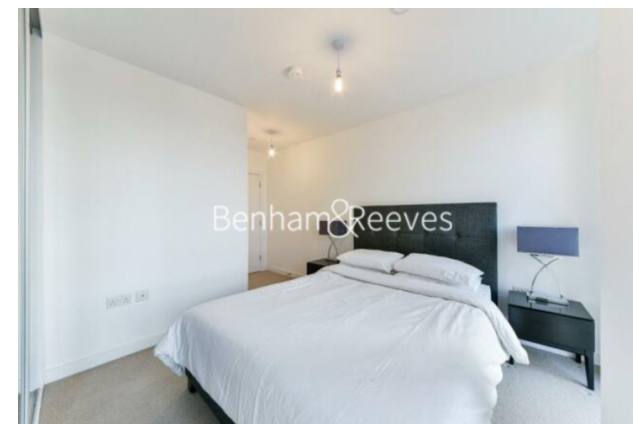
Two spacious bedrooms two bathroom apartment within walking | Concierge and resident-only gym facilities plus communal | Modern well-equipped Kitchen with appliances including dishw | Bath with overhead Shower + shower room | Two modern bathrooms, one of which is ensuite to the princip | EPC-B | Furnished with a neutral contemporary furnishing pack | DLR station is Blackwall DLR a short walk away

For more information about this property,
please call our Canary Wharf branch on

020 8036 3200

Redress & Client Money Protection :

Benham and Reeves are members of The Property Ombudsman redress scheme and have Client Money protection with ARLA Propertymark. You can find more information on our website at <https://www.benhamandreeves.com/membership/>



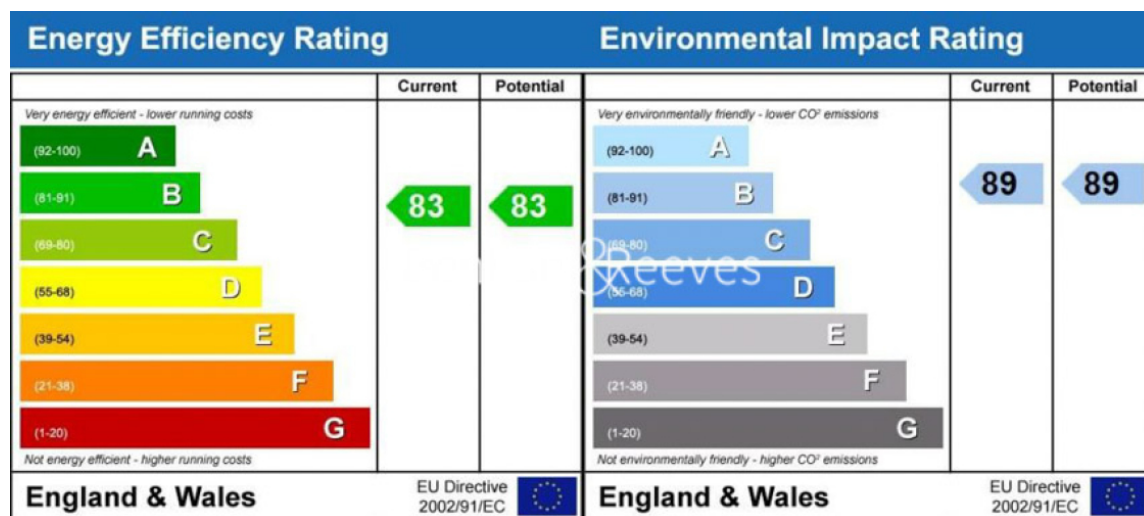
Benham & Reeves



Williamsburg Plaza ,Canary Wharf, E14

£612 per week, £2,652 per month + fees

www.benhams.com



London branches open six days a week Mon - Sat

Canary Wharf | City | Colindale | Dartmouth Park | Ealing | Fulham
Hammersmith | Hampstead | Highgate | Hyde Park | Kensington | Kew
Knightsbridge | Nine Elms | Shoreditch | Southall | Surrey Quays
Wapping | Wembley | White City | Woolwich

International offices

China | Hong Kong SAR | India | Indonesia | Qatar | Malaysia | Middle East |
Singapore | South Africa | Thailand | Turkey

