



Benham&Reeves

Lyell Street, Canary Wharf, E14

£450 per week, £1,950 per month + fees

 2 Bedrooms  2 Bathrooms  Furnished

A modern, spacious apartment with panoramic views and heated swimming pool, situated in a highly anticipated development in Canning Town, E14. Located within walking distance of Canning Town Underground and DLR station (Jubilee Line).

Please [click here](#) for full detail

Property features

Modern Apartment | Bespoke Bathroom | Brightly Lit Reception | Open Plan Kitchen | Balcony With Superb Views | EPC-B | Large Bedroom With Fitted Wardrobe | Wood Floors, Floor To Ceiling Windows & Underfloor Heating | 24 Hr Concierge, Residents Gym, Lounge And Swimming Pool | Walk Away From Canning Town Dlr And The Jubille Services

For more information about this property,
please call our Canary Wharf branch on

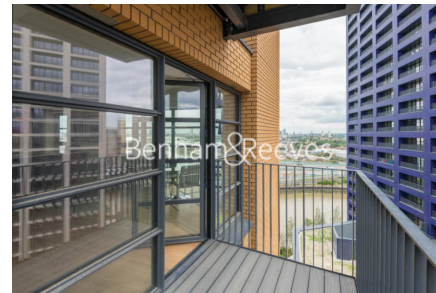
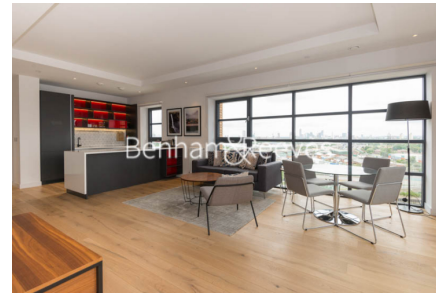
020 8036 3200

Redress & Client Money Protection :

Benham and Reeves are members of The Property Ombudsman redress scheme and have Client Money protection with ARLA Propertymark. You can find more information on our website at <https://www.benhams.com/membership/>



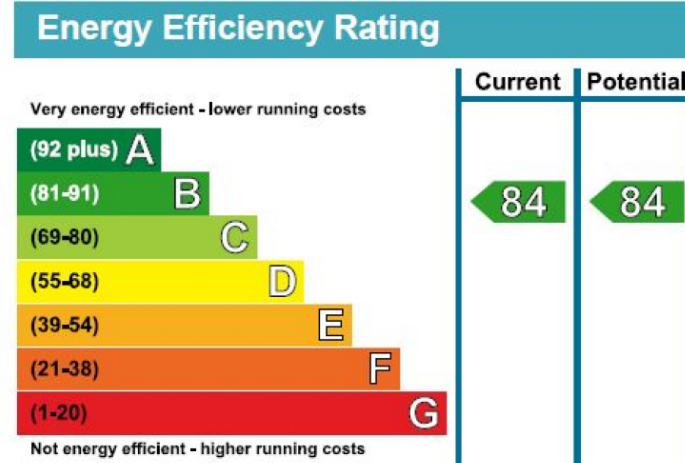
Benham & Reeves



Lyell Street, Canary Wharf, E14

£450 per week, £1,950 per month + fees

www.benhams.com



London branches open six days a week Mon - Sat

Canary Wharf | City | Colindale | Dartmouth Park | Ealing | Fulham
Hammersmith | Hampstead | Highgate | Hyde Park | Kensington | Kew
Knightsbridge | Nine Elms | Shoreditch | Southall | Surrey Quays
Wapping | Wembley | White City | Woolwich

International offices

China | Hong Kong SAR | India | Indonesia | Qatar | Malaysia | Middle East |
Singapore | South Africa | Thailand | Turkey



Benham & Reeves