



Benham & Reeves

## **New Festival Avenue, Canary Wharf, E14**

£438 per week, £1,900 per month + fees

🛏 1 Bedroom    🚿 1 Bathroom    🛋 Furnished

Contemporary, furnished 9th floor situated within a sought after development within walking distance from All Saints DLR and Popular DLR station which have easy access into Canary Wharf and the City.

Please [click here](#) for full detail

## Property features

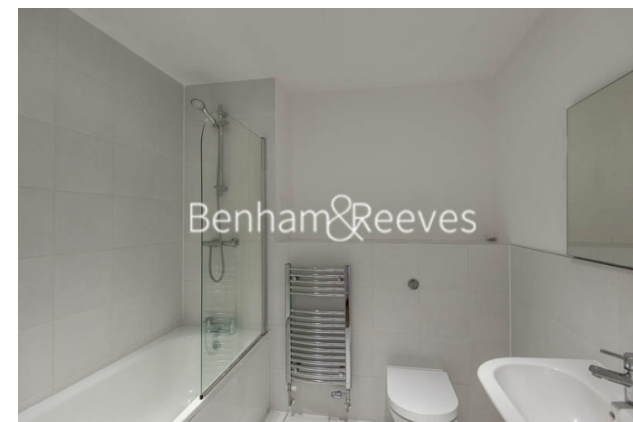
**One Double Bedroom | One Bathroom | Open Planned Living | Furnished | Fitted Kitchen | EPC-B | Balcony | Concierge | Residence Gym | All Saints and Popular DLR Station**

For more information about this property, please call our Canary Wharf branch on

**020 8036 3200**

Redress & Client Money Protection :

Benham and Reeves are members of The Property Ombudsman redress scheme and have Client Money protection with ARLA Propertymark. You can find more information on our website at <https://www.benhams.com/membership/>



Benham&Reeves

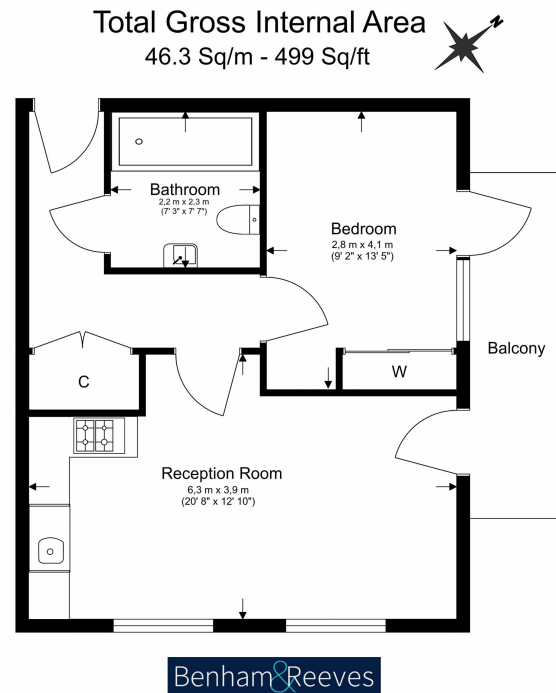




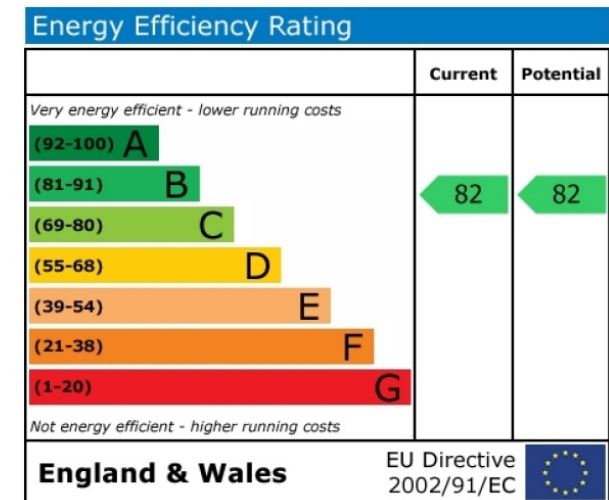
# New Festival Avenue, Canary Wharf, E14

£438 per week, £1,900 per month + fees

[www.benhams.com](http://www.benhams.com)



Floor Plan measurements are approximate and are for illustrative purposes only. While we do not doubt the floor plans accuracy, we make no guarantee, warranty or representation as to the accuracy and completeness of the floor plan.



## London branches open six days a week Mon - Sat

Canary Wharf | City | Colindale | Dartmouth Park | Ealing | Fulham  
Hammersmith | Hampstead | Highgate | Hyde Park | Kensington | Kew  
Knightsbridge | Nine Elms | Shoreditch | Southall | Surrey Quays  
Wapping | Wembley | White City | Woolwich

## International offices

China | Hong Kong SAR | India | Indonesia | Qatar | Malaysia | Middle East | Pakistan  
Singapore | South Africa | Thailand | Turkey



Benham & Reeves