



Benham & Reeves

Marsh Wall, Canary Wharf, E14

£646 per week, £2,800 per month + fees

🛏️ 2 Bedrooms 🚿 2 Bathrooms 🛋️ Furnished

A modern 20th floor apartment situated within a desirable development with stunning views of the River and Canary Wharf, this property is ideally suited to professionals.

Please [click here](#) for full detail

Property features

2 Double Bedrooms | 2 Bathrooms | Reception | Furnished | Fitted Kitchen | EPC-B | Residents' Gym | 24 Hour Concierge | Nearby Canary Wharf Tube Station

For more information about this property,
please call our Canary Wharf branch on

020 8036 3200

Redress & Client Money Protection :

Benham and Reeves are members of The Property Ombudsman redress scheme and have Client Money protection with ARLA Propertymark. You can find more information on our website at <https://www.benhamandreeves.com/membership/>



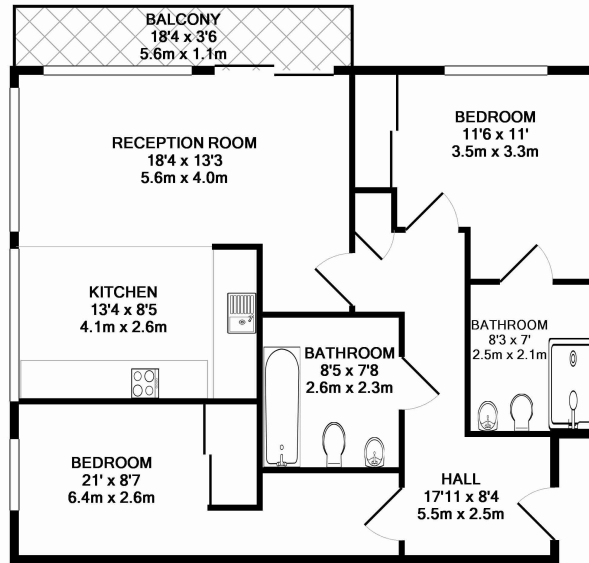
Benham & Reeves



Marsh Wall, Canary Wharf, E14

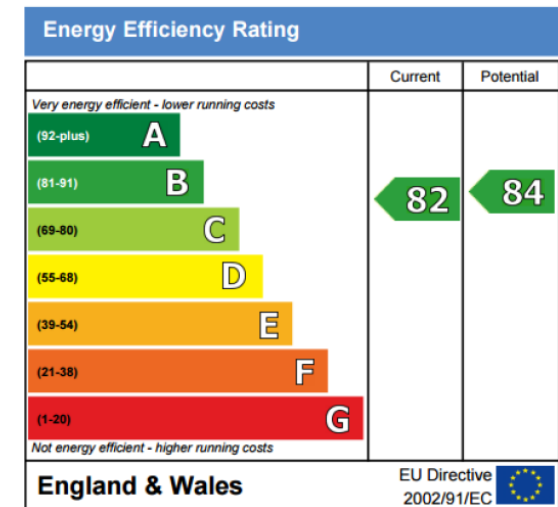
£646 per week, £2,800 per month + fees

www.benhams.com



TOTAL APPROX. FLOOR AREA 825 SQ.FT. (76.6 SQ.M.)

Whilst every attempt has been made to ensure the accuracy of the floor plan contained here, measurements of doors, windows, rooms and any other items are approximate and no responsibility is taken for any error, omission, or mis-statement. This plan is for illustrative purposes only and should be used as such by any prospective purchaser. The services, systems and appliances shown have not been tested and no guarantee as to their operability or efficiency can be given.
Made with Metropix ©2015



London branches open six days a week Mon - Sat

Canary Wharf | City | Colindale | Dartmouth Park | Ealing | Fulham
Hammersmith | Hampstead | Highgate | Hyde Park | Kensington | Kew
Knightsbridge | Nine Elms | Shoreditch | Southall | Surrey Quays
Wapping | Wembley | White City | Woolwich

International offices

China | Hong Kong SAR | India | Indonesia | Qatar | Malaysia | Middle East | Pakistan
Singapore | South Africa | Thailand | Turkey



Benham & Reeves