



Benham & Reeves

Marsh Wall, Canary wharf, E14

£831 per week, £3,600 per month + fees

 2 Bedrooms  2 Bathrooms  Furnished

An exceptional apartment set on a high floor, situated in a sought-after development. Located a short walk from South Quay DLR station where there are connections to the Canary wharf. Residents further benefit from a concierge service, access to residential gymnasium and close to local amenities.

Please [click here](#) for full detail

Property features

Two Double Bedroom | Two Bathroom | Open Planned Living Room pprox | Furnished | Fitted Kitchen | EPC-B | Concierge | Gym | Facing south and west | Short walk South Quay DLR station

For more information about this property, please call our Canary Wharf branch on

020 8036 3200

Redress & Client Money Protection :

Benham and Reeves are members of The Property Ombudsman redress scheme and have Client Money protection with ARLA Propertymark. You can find more information on our website at <https://www.benhamandreeves.com/membership/>



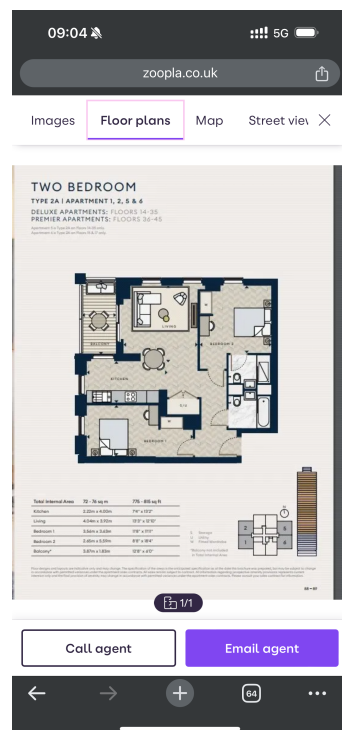
Benham&Reeves



Marsh Wall, Canary wharf, E14

£831 per week, £3,600 per month + fees

www.benhams.com



Score	Energy rating	Current	Potential
92+	A		
81-91	B	85 B	85 B
69-80	C		
55-68	D		
39-54	E		
21-38	F		
1-20	G		

London branches open six days a week Mon - Sat

Canary Wharf | City | Colindale | Dartmouth Park | Ealing | Fulham
Hammersmith | Hampstead | Highgate | Hyde Park | Kensington | Kew
Knightsbridge | Nine Elms | Shoreditch | Southall | Surrey Quays
Wapping | Wembley | White City | Woolwich

International offices

China | Hong Kong SAR | India | Indonesia | Qatar | Malaysia | Middle East |
Singapore | South Africa | Thailand | Turkey



Benham & Reeves