



Benham & Reeves

Marsh Wall, Canary Wharf, E14

£715 per week, £3,098 per month + fees

 2 Bedrooms  2 Bathrooms  Furnished

A bright and spacious apartment on the upper floors of the Landmark Towers development at Marsh Wall offering stunning views of Canary Wharf, and 24-hour concierge front desk and access to the DLR and Jubilee Line

Please [click here](#) for full detail

Property features

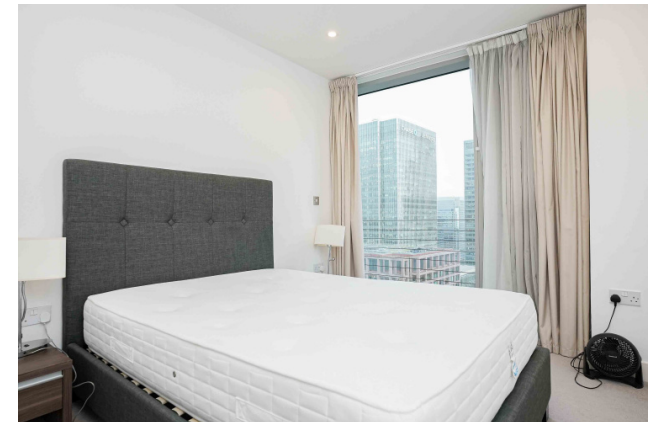
Two Double Bedrooms, Two Bathrooms | Open Planned with floor to ceiling Windows | Property offered on a furnished | Well equipped Kitchen, including dishwasher, washer/dryer | Walking Distance to Canary Wharf and all stations | EPC-B | 24 Hours Concierge, Secured and Gated | Under floor heater and air cooling | Jubilee Line, Elizabeth line and DLR stations all within

For more information about this property,
please call our Canary Wharf branch on

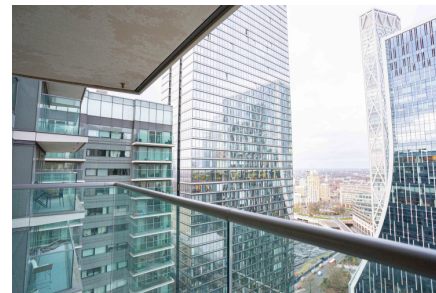
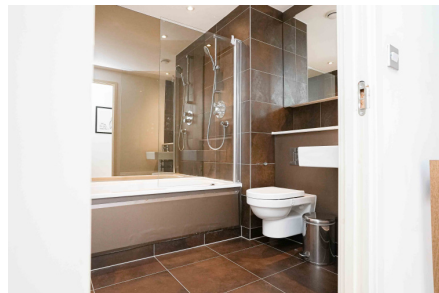
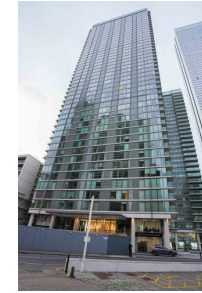
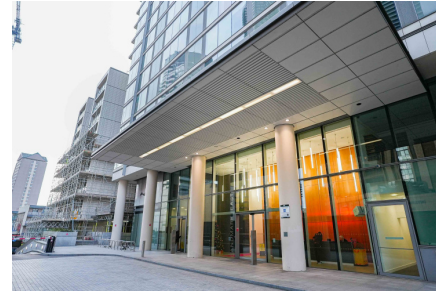
020 8036 3200

Redress & Client Money Protection :

Benham and Reeves are members of The Property Ombudsman redress scheme and have Client Money protection with ARLA Propertymark. You can find more information on our website at <https://www.benhams.com/membership/>



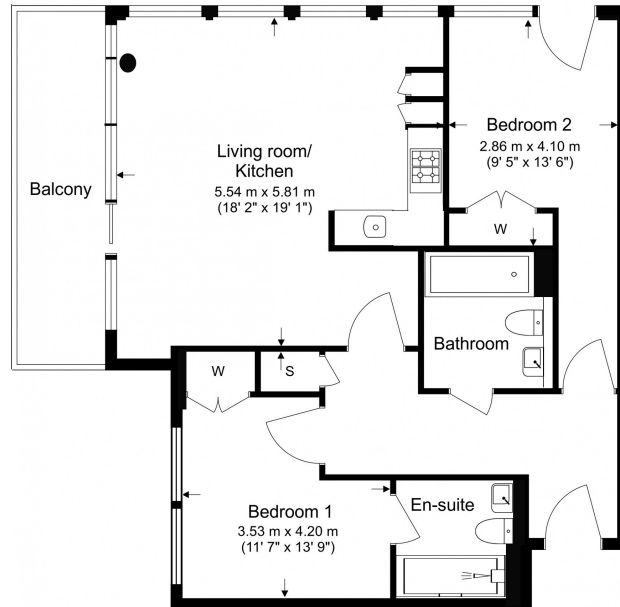
Benham & Reeves



Marsh Wall, Canary Wharf, E14

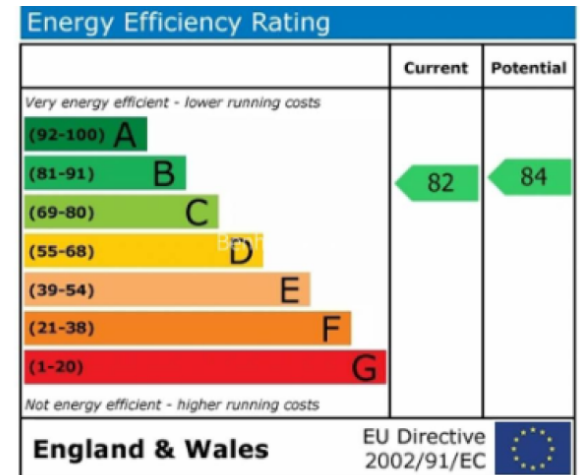
£715 per week, £3,098 per month + fees

www.benhams.com



Benham & Reeves

Floor Plan measurements are approximate and are for illustrative purposes only. While we do not doubt the floor plans accuracy, we make no guarantee, warranty or representation as to the accuracy and completeness of the floor plan.



London branches open six days a week Mon - Sat

Canary Wharf | City | Colindale | Dartmouth Park | Ealing | Fulham
Hammersmith | Hampstead | Highgate | Hyde Park | Kensington | Kew
Knightsbridge | Nine Elms | Shoreditch | Southall | Surrey Quays
Wapping | Wembley | White City | Woolwich

International offices

China | Hong Kong SAR | India | Indonesia | Qatar | Malaysia | Middle East | Pakistan
Singapore | South Africa | Thailand | Turkey



Benham & Reeves