



Benham & Reeves

Pan Peninsula Square, Canary Wharf, E14

£438 per week, £1,900 per month + fees

 Studio  1 Bathroom  Furnished

Modern studio apartment with residents' 5 * Health Club located within walking distance of Canary Wharf and excellent transport links including South Quay DLR station.

Please [click here](#) for full detail

Property features

Manhattan studio | Shower Room | Open Planned Living | Furnished | Fitted Kitchen | EPC-C | Balcony | 24 Hour Concierge | Residents Gym | Nearby South Quay DLR Station

For more information about this property,
please call our Canary Wharf branch on

020 8036 3200

Redress & Client Money Protection :

Benham and Reeves are members of The Property Ombudsman redress scheme and have Client Money protection with ARLA Propertymark. You can find more information on our website at <https://www.benhams.com/membership/>



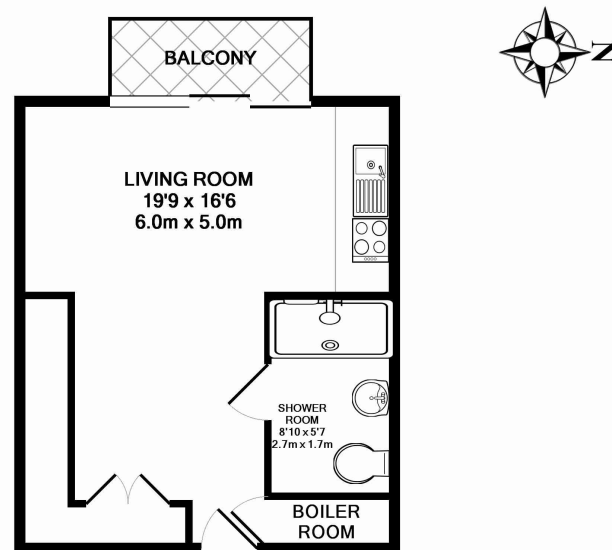
Benham & Reeves



Pan Peninsula Square, Canary Wharf, E14

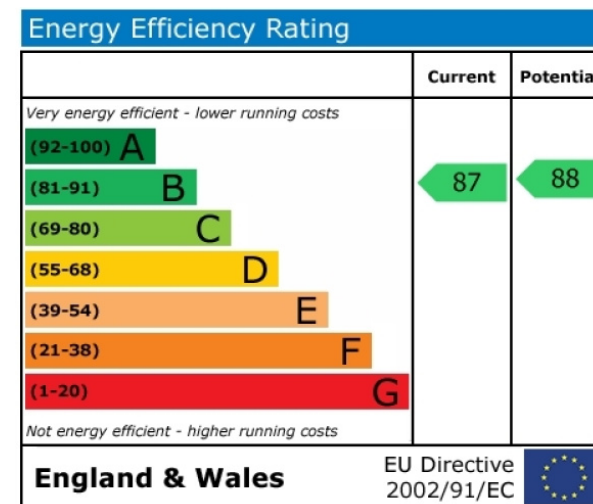
£438 per week, £1,900 per month + fees

www.benhams.com



TOTAL APPROX. FLOOR AREA 325 SQ.FT. (30.2 SQ.M.)

Whilst every attempt has been made to ensure the accuracy of the floor plan contained here, measurements of doors, windows, rooms and any other items are approximate and no responsibility is taken for any error, omission, or mis-statement. This plan is for illustrative purposes only and should be used as such by any prospective purchaser. The services, systems and appliances shown have not been tested and no guarantee as to their operability or efficiency can be given
Made with Metropix ©2016



London branches open six days a week Mon - Sat

Canary Wharf | City | Colindale | Dartmouth Park | Ealing | Fulham
Hammersmith | Hampstead | Highgate | Hyde Park | Kensington | Kew
Knightsbridge | Nine Elms | Shoreditch | Southall | Surrey Quays
Wapping | Wembley | White City | Woolwich

International offices

China | Hong Kong SAR | India | Indonesia | Qatar | Malaysia | Middle East |
Singapore | South Africa | Thailand | Turkey



Benham & Reeves