



Benham & Reeves

## **Lincoln Plaza, Canary Wharf, E14**

£727 per week, £3,150 per month + fees

🛏️ 2 Bedrooms    🚿 2 Bathrooms    🛋️ Furnished

A modern spacious apartment situated in a desirable prestigious development within walking distances from South Quay DLR Rail Station.

Please [click here](#) for full detail

## Property features

**Two Double Bedrooms | Two Bathrooms | Open Planned Living Space | Fully Fitted Kitchen | Furnished | EPC-B | 814 SQ FT | 24-Hour Concierge | South Quay DLR Station**

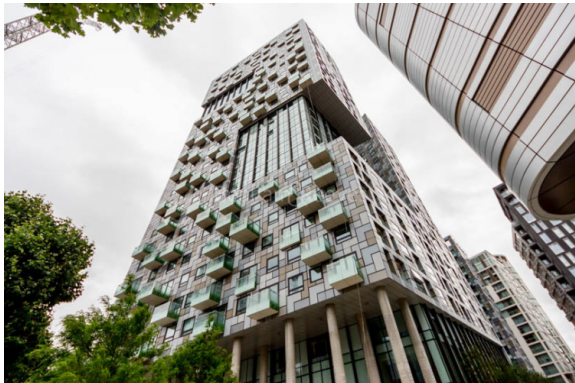
For more information about this property,  
please call our Canary Wharf branch on

**020 8036 3200**



Redress & Client Money Protection :  
Benham and Reeves are members of The Property Ombudsman redress scheme and have Client Money protection with ARLA Propertymark.  
You can find more information on our website at <https://www.benhamandreeves.com/membership/>

Benham & Reeves

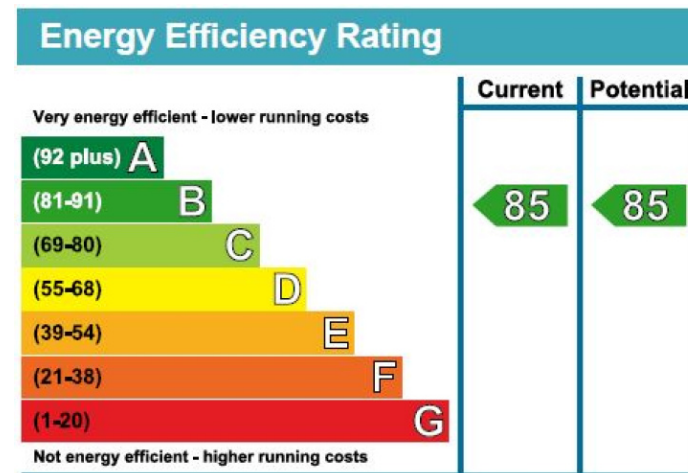
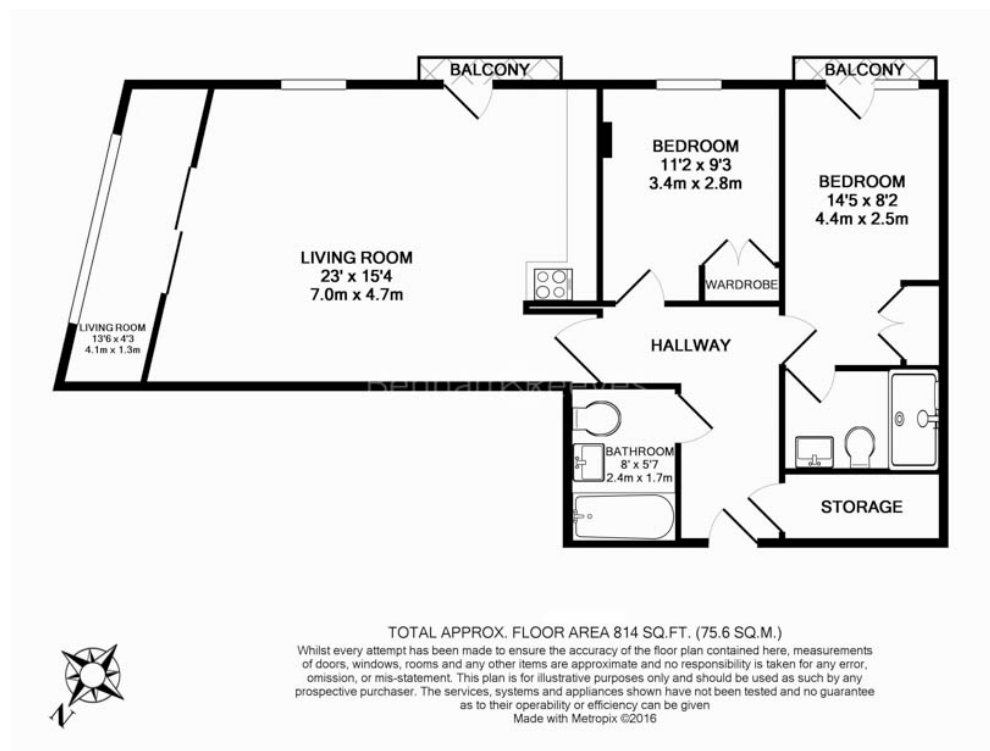




# Lincoln Plaza, Canary Wharf, E14

£727 per week, £3,150 per month + fees

[www.benhams.com](http://www.benhams.com)



## London branches open six days a week Mon - Sat

Canary Wharf | City | Colindale | Dartmouth Park | Ealing | Fulham  
Hammersmith | Hampstead | Highgate | Hyde Park | Kensington | Kew  
Knightsbridge | Nine Elms | Shoreditch | Southall | Surrey Quays  
Wapping | Wembley | White City | Woolwich

## International offices

China | Hong Kong SAR | India | Indonesia | Qatar | Malaysia | Middle East |  
Singapore | South Africa | Thailand | Turkey



Benham & Reeves