



Benham & Reeves

Millharbour, Canary Wharf, E14

£519 per week, £2,250 per month + fees

 1 Bedroom  1 Bathroom  Furnished

A modern new apartment situated within a luxury development located in a vibrant area with excellent transport links. South Quay DLR is positioned just 0.2m away, and Canary Wharf Station just 0.3m, on the Jubilee and Elizabeth Lines, which provide swift connectivity throughout the capital and beyond. Enjoy access to a range of local supermarkets, shops and a vast selection of trendy bars and restaurants.

Please [click here](#) for full detail

Property features

Large Double Bedroom | One Bathroom | Bright Open Planned Living | Fitted Kitchen | 63 Square meter flat | EPC -C | Gym and Residents Lounge | Residence Gym | One parking space | South Quay DLR Station and Canary Wharf Underground

For more information about this property,
please call our Canary Wharf branch on

020 8036 3200

Redress & Client Money Protection :

Benham and Reeves are members of The Property Ombudsman redress scheme and have Client Money protection with ARLA Propertymark. You can find more information on our website at <https://www.benhams.com/membership/>



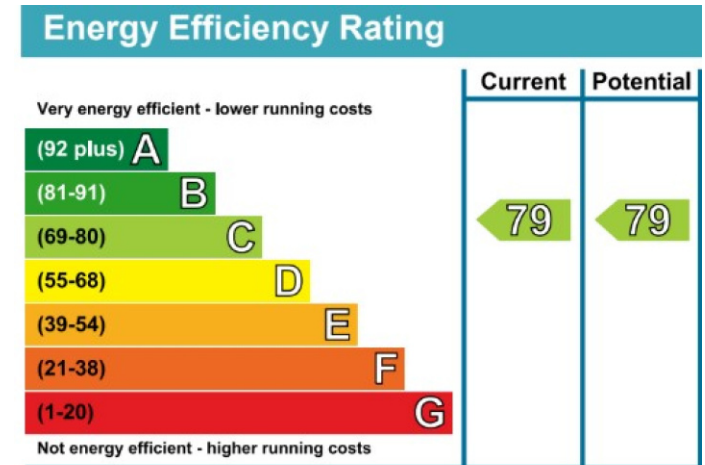
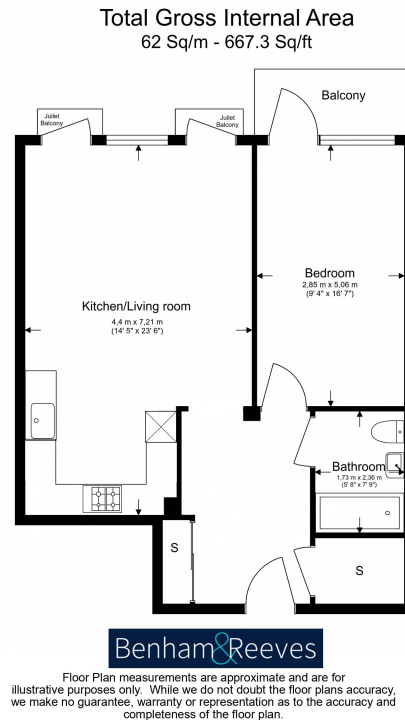
Benham & Reeves



Millharbour, Canary Wharf, E14

£519 per week, £2,250 per month + fees

www.benhams.com



London branches open six days a week Mon - Sat

Canary Wharf | City | Colindale | Dartmouth Park | Ealing | Fulham
Hammersmith | Hampstead | Highgate | Hyde Park | Kensington | Kew
Knightsbridge | Nine Elms | Shoreditch | Southall | Surrey Quays
Wapping | Wembley | White City | Woolwich

International offices

China | Hong Kong SAR | India | Indonesia | Qatar | Malaysia | Middle East | Pakistan
Singapore | South Africa | Thailand | Turkey



Benham & Reeves