



Benham&Reeves

Lanterns Way, Canary Wharf, E14

£450 per week, £1,950 per month + fees

🛏 1 Bedroom 🚿 1 Bathroom 🛋 Furnished

A modern fourth floor apartment located in a sought-after development in the South Quay with views toward Canary Wharf. Perfectly situated within walking distance of South Quay DLR and Canary Wharf.

Please [click here](#) for full detail

Property features

Large Double Bedroom | Family Size Bathroom | One Planned Living | Modern Furnishing | Fitted Kitchen | EPC-B | Balcony | 24 Hour Concierge | Residents Gym | South Quay DLR Station

For more information about this property, please call our Canary Wharf branch on

020 8036 3200



Redress & Client Money Protection :

Benham and Reeves are members of The Property Ombudsman redress scheme and have Client Money protection with ARLA Propertymark. You can find more information on our website at <https://www.benham.com/membership/>

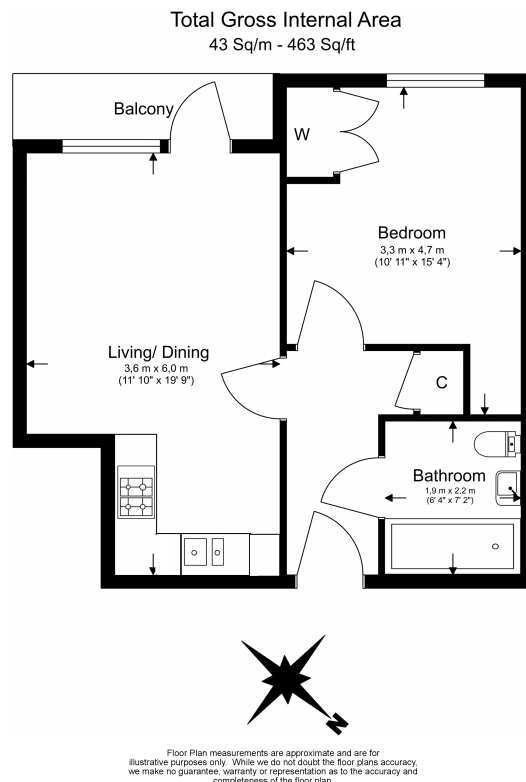
Benham & Reeves



Lanterns Way, Canary Wharf, E14

£450 per week, £1,950 per month + fees

www.benhams.com



Energy Efficiency Rating		
	Current	Potential
Very energy efficient - lower running costs		
(92-100) A		
(81-91) B	85	86
(69-80) C		
(55-68) D		
(39-54) E		
(21-38) F		
(1-20) G		
Not energy efficient - higher running costs		
England & Wales	EU Directive 2002/91/EC	

London branches open six days a week Mon - Sat

Canary Wharf | City | Colindale | Dartmouth Park | Ealing | Fulham
Hammersmith | Hampstead | Highgate | Hyde Park | Kensington | Kew
Knightsbridge | Nine Elms | Shoreditch | Southall | Surrey Quays
Wapping | Wembley | White City | Woolwich

International offices

China | Hong Kong SAR | India | Indonesia | Qatar | Malaysia | Middle East |
Singapore | South Africa | Thailand | Turkey



Benham & Reeves