



Benham & Reeves

## **South Quay Square, Canary Wharf, E14**

£831 per week, £3,600 per month + fees

 2 Bedrooms     2 Bathrooms     Furnished

A stylish apartment situated in a sought-after vibrant riverside development development, with excellent transport links from the City.

Please [click here](#) for full detail

## Property features

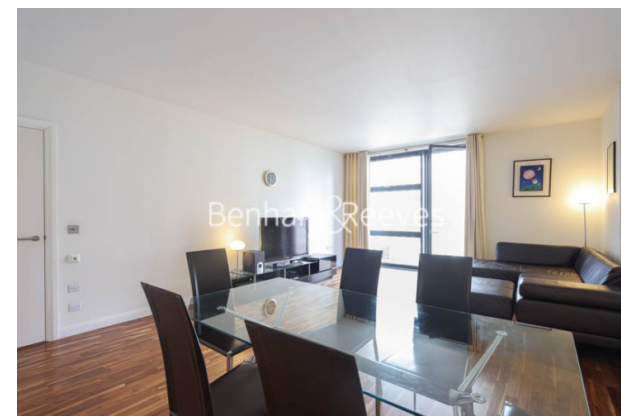
**Two Double Bedroom | Two Bathroom | Open Planned Living Room pprox | Furnished | Fitted Kitchen | EPC-C | Concierge | One Balcony | Close to canary wharf station**

For more information about this property,  
please call our Canary Wharf branch on

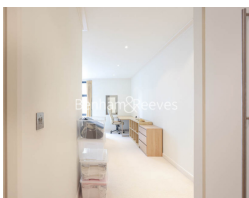
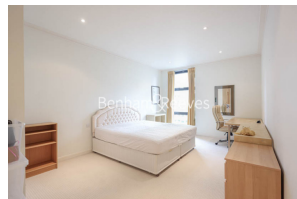
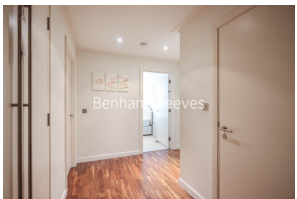
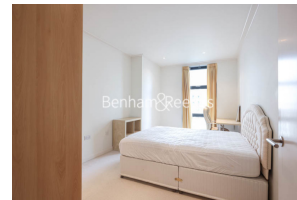
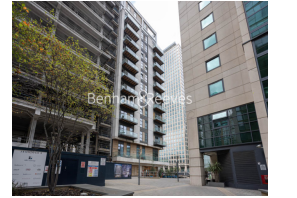
**020 8036 3200**

Redress & Client Money Protection :

Benham and Reeves are members of The Property Ombudsman redress scheme and have Client Money protection with ARLA Propertymark. You can find more information on our website at <https://www.benhams.com/membership/>



**Benham&Reeves**



# South Quay Square, Canary Wharf, E14

£831 per week, £3,600 per month + fees

[www.benhams.com](http://www.benhams.com)

Score	Energy rating	Current	Potential
92+	A		
81-91	B		
69-80	C	74   c	75   c
55-68	D		
39-54	E		
21-38	F		
1-20	G		

## London branches open six days a week Mon - Sat

Canary Wharf | City | Colindale | Dartmouth Park | Ealing | Fulham  
Hammersmith | Hampstead | Highgate | Hyde Park | Kensington | Kew  
Knightsbridge | Nine Elms | Shoreditch | Southall | Surrey Quays  
Wapping | Wembley | White City | Woolwich

## International offices

China | Hong Kong SAR | India | Indonesia | Qatar | Malaysia | Middle East | Pakistan  
Singapore | South Africa | Thailand | Turkey

