



Benham & Reeves

**Arniston Way, Canary wharf, E14**

£577 per week, £2,500 per month + fees

 1 Bedroom     1 Bathroom     Furnished

Open-plan living area with high-spec finishes. This penthouse is equipped with a water softener, under floor heating, air conditioning and hvac system. Features secondary glazing and extra insulation for improved sound proofing and energy efficiency.

Please [click here](#) for full detail

## Property features

**One Double Bedroom | One Bathroom | Open Planned Living Room | Furnished | Fitted Kitchen | EPC-B | 24 hrs Concierge | Close to canary wharf | Next to Blackwall DLR station**

For more information about this property,  
please call our Canary Wharf branch on

**020 8036 3200**

Redress & Client Money Protection :

Benham and Reeves are members of The Property Ombudsman redress scheme and have Client Money protection with ARLA Propertymark. You can find more information on our website at <https://www.benhamandreeves.com/membership/>



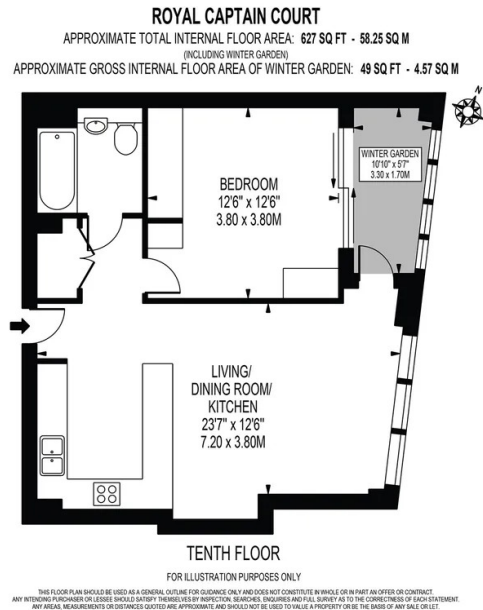
Benham & Reeves



# Arniston Way, Canary wharf, E14

£577 per week, £2,500 per month + fees

www.benhams.com



Score	Energy rating	Current	Potential
92+	A		
81-91	B	90 B	90 B
69-80	C		
55-68	D		
39-54	E		
21-38	F		
1-20	G		

## London branches open six days a week Mon - Sat

Canary Wharf | City | Colindale | Dartmouth Park | Ealing | Fulham  
 Hammersmith | Hampstead | Highgate | Hyde Park | Kensington | Kew  
 Knightsbridge | Nine Elms | Shoreditch | Southall | Surrey Quays  
 Wapping | Wembley | White City | Woolwich

## International offices

China | Hong Kong SAR | India | Indonesia | Qatar | Malaysia | Middle East | Pakistan  
 Singapore | South Africa | Thailand | Turkey



Benham & Reeves