



Benham&Reeves

## **Lincoln Plaza, Canary Wharf, E14**

£392 per week, £1,700 per month + fees

🛏 1 Bedroom    🚿 1 Bathroom    🛋 Furnished

Modern 5th floor apartment, with allocated parking, set within an incredible building situated in an iconic development in the heart of Canary Wharf residential area. The property is located within walking distance from South Quay DLR Rail station.

Please [click here](#) for full detail

## Property features

**One Double Bedroom | One Bathroom | Open Planned Living | Furnished | Fitted Kitchen | EPC-B | Communal Terrace | Parking | 24 Hour Concierge Service | South Quay DLR Station**

For more information about this property, please call our Canary Wharf branch on

**020 8036 3200**

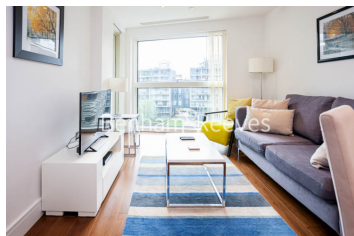
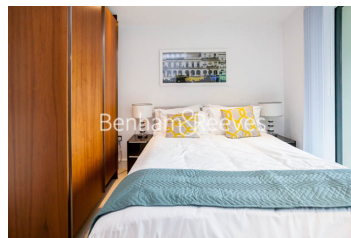
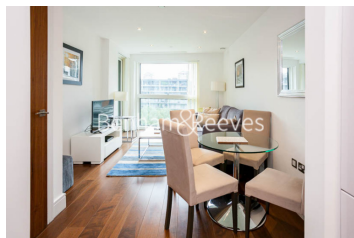
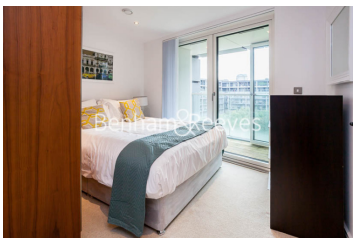
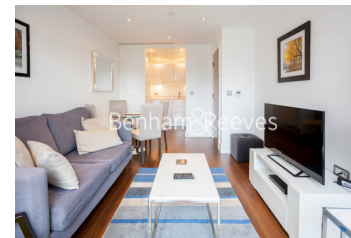
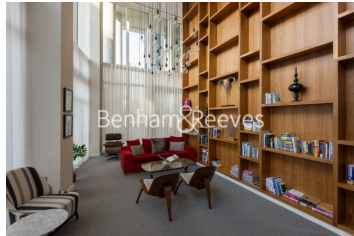
Redress & Client Money Protection :

Benham and Reeves are members of The Property Ombudsman redress scheme and have Client Money protection with ARLA Propertymark. You can find more information on our website at <https://www.benhamandreeves.com/membership/>



Benham & Reeves

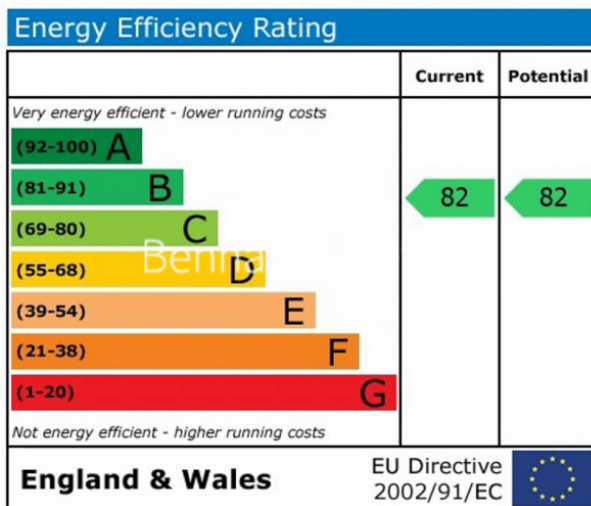




# Lincoln Plaza, Canary Wharf, E14

£392 per week, £1,700 per month + fees

[www.benhams.com](http://www.benhams.com)



## London branches open six days a week Mon - Sat

Canary Wharf | City | Colindale | Dartmouth Park | Ealing | Fulham  
Hammersmith | Hampstead | Highgate | Hyde Park | Kensington | Kew  
Knightsbridge | Nine Elms | Shoreditch | Southall | Surrey Quays  
Wapping | Wembley | White City | Woolwich

## International offices

China | Hong Kong SAR | India | Indonesia | Qatar | Malaysia | Middle East |  
Singapore | South Africa | Thailand | Turkey

