



Benham & Reeves

**Wallwood Street, Canary Wharf, E14**

£554 per week, £2,400 per month + fees

 2 Bedrooms    2 Bathrooms    Furnished

Spacious 3rd floor apartment with wood flooring situated in a modern development a brief walk from Canary Wharf Station (Jubilee Line). EPC-B

Please [click here](#) for full detail

## Property features

**Two Double Bedrooms | Two Bathrooms | Open Planned Living | Furnished | Fitted Kitchen | EPC-B | Balcony | Private outside space | Storage space | Great transportation link to city and canary wharf**

For more information about this property,  
please call our Canary Wharf branch on

**020 8036 3200**

Redress & Client Money Protection :

Benham and Reeves are members of The Property Ombudsman redress scheme and have Client Money protection with ARLA Propertymark. You can find more information on our website at <https://www.benhams.com/membership/>



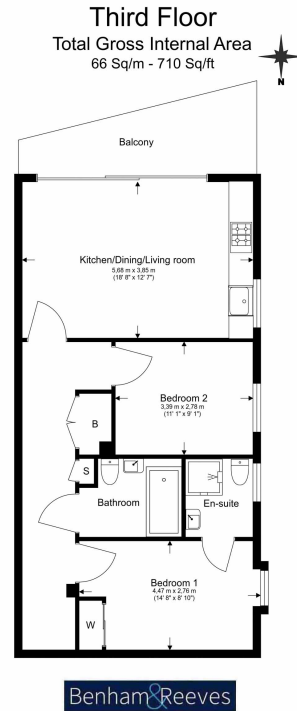
**Benham & Reeves**



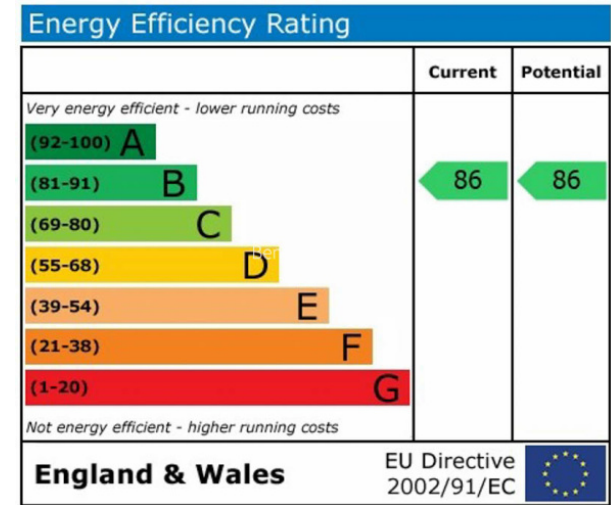
# Wallwood Street, Canary Wharf, E14

£554 per week, £2,400 per month + fees

www.benhams.com



Floor Plan measurements are approximate and are for illustrative purposes only. While we do not doubt the floor plans accuracy, we make no guarantee, warranty or representation as to the accuracy and completeness of the floor plan.



## London branches open six days a week Mon - Sat

Canary Wharf | City | Colindale | Dartmouth Park | Ealing | Fulham  
Hammersmith | Hampstead | Highgate | Hyde Park | Kensington | Kew  
Knightsbridge | Nine Elms | Shoreditch | Southall | Surrey Quays  
Wapping | Wembley | White City | Woolwich

## International offices

China | Hong Kong SAR | India | Indonesia | Qatar | Malaysia | Middle East |  
Singapore | South Africa | Thailand | Turkey

