



Benham & Reeves

East Ferry Road, Canary Wharf, E14

£669 per week, £2,900 per month + fees

 2 Bedrooms  2 Bathrooms  Furnished

A contemporary two-bedroom apartment in the heart of Canary Wharf, featuring a residents' gym and secure bicycle storage. Ideally located just a short walk from Crossharbour and South Quay DLR stations, offering excellent transport links.

Please [click here](#) for full detail

Property features

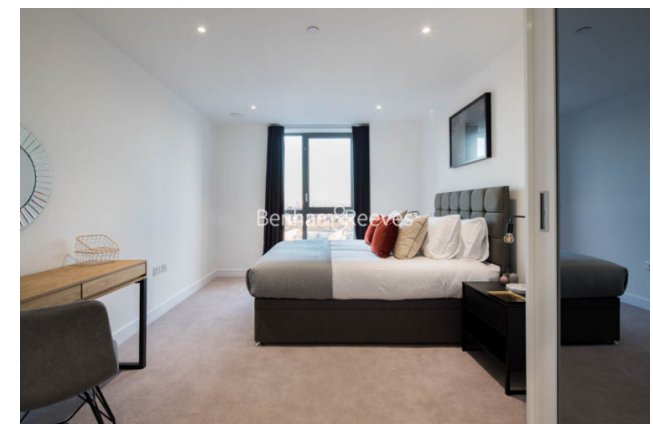
Bright Living Room | Two Modern Furnished Double Bedrooms | Two Large Bathrooms | Fitted Kitchen, Including Dishwasher | Private Balcony | EPC-B | High Energy Rate Efficiency | 24-hour Concierge | Residents Gym and Bicycle Storage | Crossharbour and South Quay DLR station nearby

For more information about this property, please call our Canary Wharf branch on

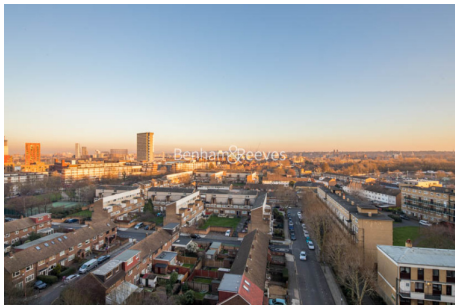
020 8036 3200

Redress & Client Money Protection :

Benham and Reeves are members of The Property Ombudsman redress scheme and have Client Money protection with ARLA Propertymark. You can find more information on our website at <https://www.benhams.com/membership/>



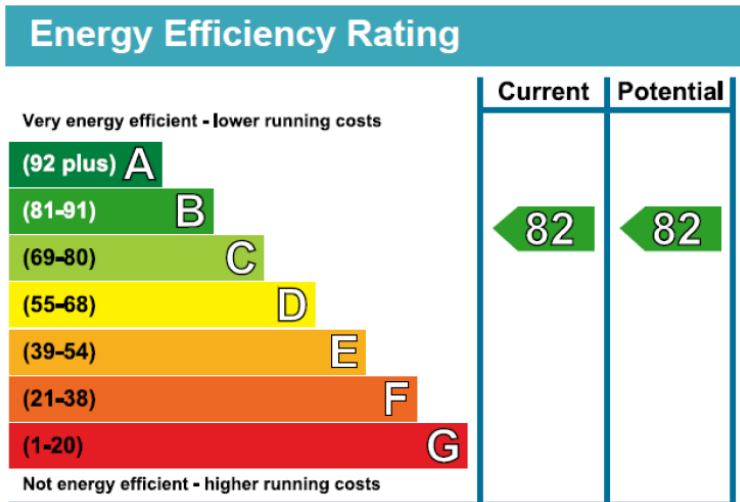
Benham & Reeves



East Ferry Road, Canary Wharf, E14

£669 per week, £2,900 per month + fees

www.benhams.com



London branches open six days a week Mon - Sat

Canary Wharf | City | Colindale | Dartmouth Park | Ealing | Fulham
Hammersmith | Hampstead | Highgate | Hyde Park | Kensington | Kew
Knightsbridge | Nine Elms | Shoreditch | Southall | Surrey Quays
Wapping | Wembley | White City | Woolwich

International offices

China | Hong Kong SAR | India | Indonesia | Qatar | Malaysia | Middle East |
Singapore | South Africa | Thailand | Turkey

