



Benham & Reeves

Pan Peninsula Square, Canary Wharf, E14

£370 per week, £1,603 per month + fees

 Studio  1 Bathroom  Furnished

A stylish studio apartment set on the 16th floor of the Pan Peninsula Development. The development is modern and ideally located in Canary Wharf and the City with excellent transport links. Ideal for any professional working in Canary Wharf or the City.

Please [click here](#) for full detail

Property features

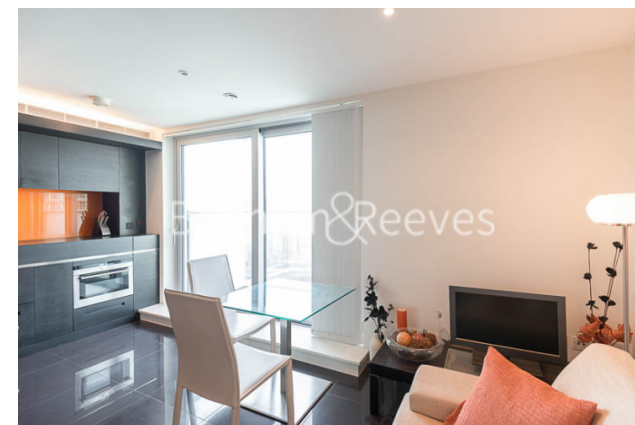
Manhattan Studio | Modern Bathroom | Open Plan Living Space | Fitted Kitchen | Fully Furnished | EPC-B | 24-Hour Concierge | Balcony | Residents Gym | South Quay Station Nearby

For more information about this property, please call our Canary Wharf branch on

020 8036 3200

Redress & Client Money Protection :

Benham and Reeves are members of The Property Ombudsman redress scheme and have Client Money protection with ARLA Propertymark. You can find more information on our website at <https://www.benhams.com/membership/>



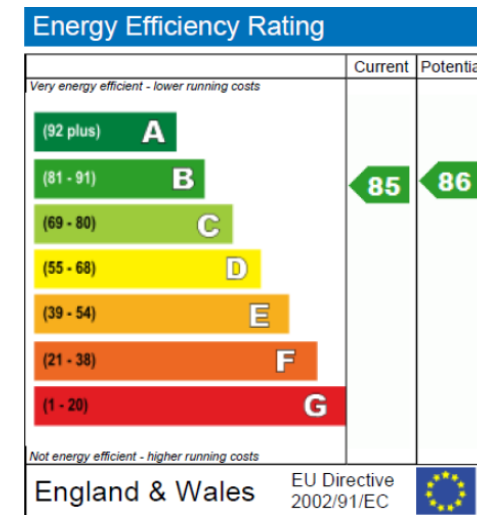
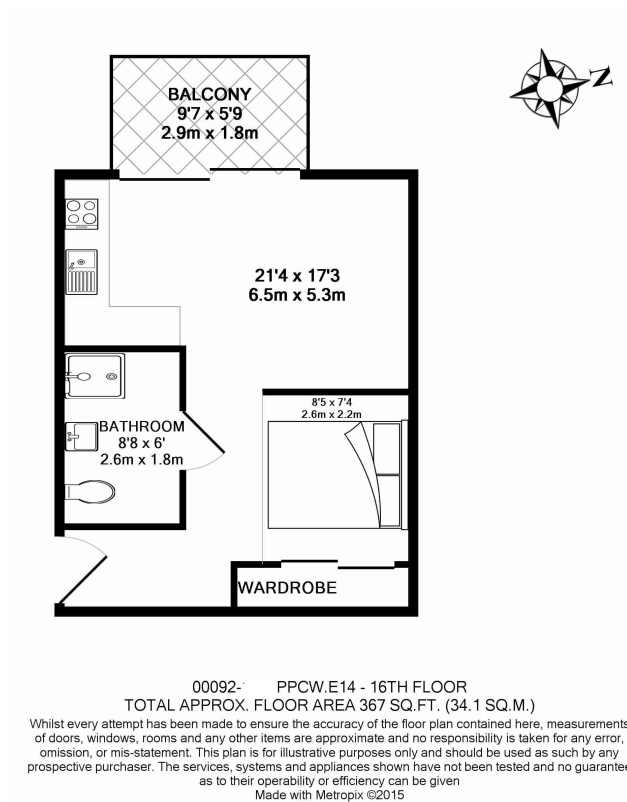
Benham & Reeves



Pan Peninsula Square, Canary Wharf, E14

£370 per week, £1,603 per month + fees

www.benhams.com



London branches open six days a week Mon - Sat

Canary Wharf | City | Colindale | Dartmouth Park | Ealing | Fulham
Hammersmith | Hampstead | Highgate | Hyde Park | Kensington | Kew
Knightsbridge | Nine Elms | Shoreditch | Southall | Surrey Quays
Wapping | Wembley | White City | Woolwich

International offices

China | Hong Kong SAR | India | Indonesia | Qatar | Malaysia | Middle East |
Singapore | South Africa | Thailand | Turkey



Benham & Reeves