



Benham & Reeves

Lensbury Avenue, Fulham, SW6

£1,500 per week, £6,500 per month + fees

 3 Bedrooms  3 Bathrooms  Furnished

A large contemporary apartment set over two floors in a vibrant and popular Riverside development, close to the amenities of Fulham and Chelsea, and a short walk from Imperial Wharf Overground station.

Please [click here](#) for full detail

Property features

3 Bedrooms | 3 Bathrooms | Open Plan Reception | Furnished | Fitted Kitchen | EPC-D | Lifts | River Views | Nearby Imperial Wharf Station

For more information about this property,
please call our Fulham branch on

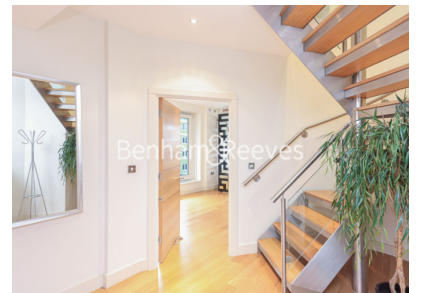
020 7348 7620

Redress & Client Money Protection :

Benham and Reeves are members of The Property Ombudsman redress scheme and have Client Money protection with ARLA Propertymark. You can find more information on our website at <https://www.benhamandreeves.com/membership/>



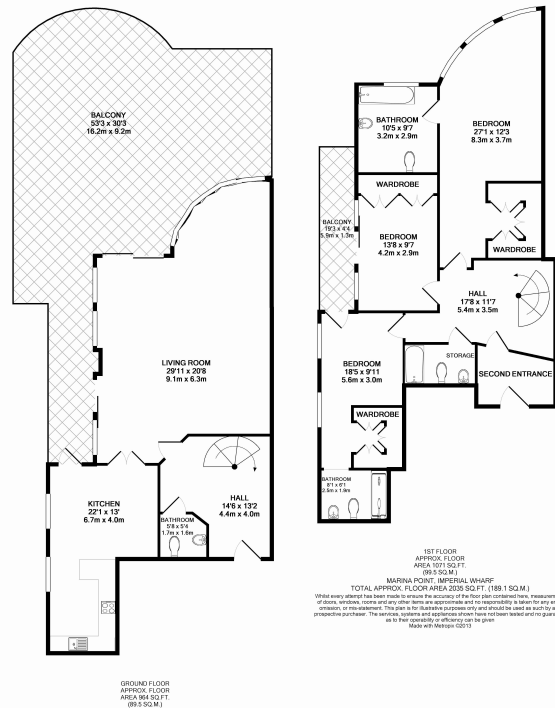
Benham & Reeves



Lensbury Avenue, Fulham, SW6

£1,500 per week, £6,500 per month + fees

www.benhams.com



Score	Energy rating	Current	Potential
92+	A		
81-91	B		
69-80	C	75 C	77 C
55-68	D		
39-54	E		
21-38	F		
1-20	G		

London branches open six days a week Mon - Sat

Canary Wharf | City | Colindale | Dartmouth Park | Ealing | Fulham
Hammersmith | Hampstead | Highgate | Hyde Park | Kensington | Kew
Knightsbridge | Nine Elms | Shoreditch | Southall | Surrey Quays
Wapping | Wembley | White City | Woolwich

International offices

China | Hong Kong SAR | India | Israel | Malaysia | Middle East | Pakistan
Qatar | Singapore | South Africa | Thailand | Turkey



Benham & Reeves