



Benham & Reeves

## **John Cabot House, Canary Wharf, E16**

£462 per week, £2,000 per month + fees

 1 Bedroom     1 Bathroom     Furnished

A contemporary apartment located next Pontoon Dock DLR station, in a new riverside development. Conveniently located a short walk from Pontoon Dock DLR station.

Please [click here](#) for full detail

## Property features

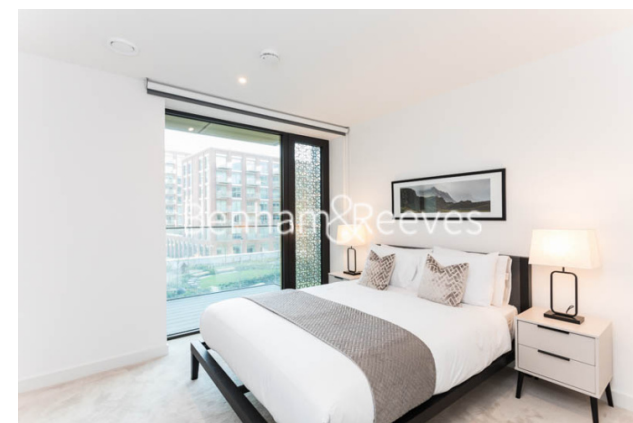
**Double bedroom | Large open-plan reception | Modern furniture | Fitted Kitchen, including dishwasher | Family-size bathroom | EPC-B | Balcony | 24 Hour Concierge | Pontoon Dock DLR Station**

For more information about this property,  
please call our Canary Wharf branch on

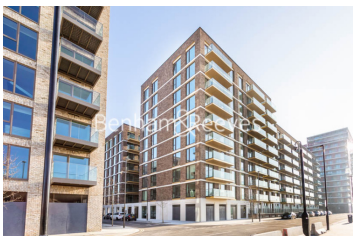
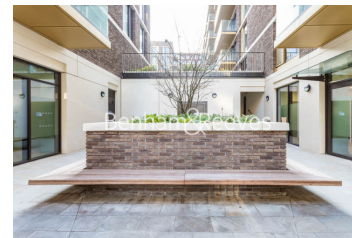
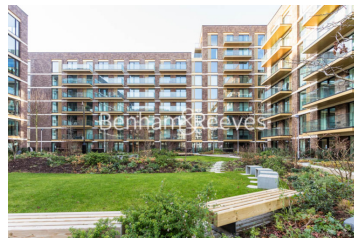
**020 8036 3200**

Redress & Client Money Protection :

Benham and Reeves are members of The Property Ombudsman redress scheme and have Client Money protection with ARLA Propertymark. You can find more information on our website at <https://www.benhamandreeves.com/membership/>



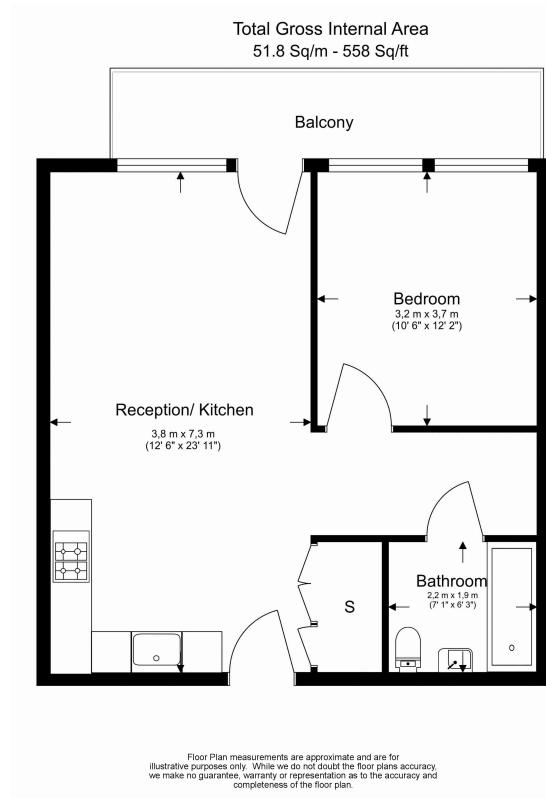
Benham & Reeves



# John Cabot House, Canary Wharf, E16

£462 per week, £2,000 per month + fees

[www.benhams.com](http://www.benhams.com)



Energy Efficiency Rating		
	Current	Potential
Very energy efficient - lower running costs		
(92-100) A	82	82
(81-91) B		
(69-80) C		
(55-68) D		
(39-54) E		
(21-38) F		
(1-20) G		
Not energy efficient - higher running costs		
England & Wales		EU Directive 2002/91/EC

## London branches open six days a week Mon - Sat

Canary Wharf | City | Colindale | Dartmouth Park | Ealing | Fulham  
Hammersmith | Hampstead | Highgate | Hyde Park | Kensington | Kew  
Knightsbridge | Nine Elms | Shoreditch | Southall | Surrey Quays  
Wapping | Wembley | White City | Woolwich

## International offices

China | Hong Kong SAR | India | Indonesia | Qatar | Malaysia | Middle East | Pakistan  
Singapore | South Africa | Thailand | Turkey



Benham & Reeves