



Benham & Reeves

**Marsh Wall, Canary Wharf, E22**

£589 per week, £2,552 per month + fees

 1 Bedroom    1 Bathroom     
Furnished/UnFurnished

Stunning apartment, set within a highly prestigious development with luxury residents facilities including an exclusive club membership.

Please [click here](#) for full detail

## Property features

**One Bedroom | One Bathroom | Open Plan Living | 24-hour Concierge | Fitted Kitchen | EPC-B | Residents Onsite Amenities - Coming Soon | Furnished to High Standard | Nearby Canary Wharf Underground Station**

For more information about this property,  
please call our Canary Wharf branch on

**020 8036 3200**

Redress & Client Money Protection :

Benham and Reeves are members of The Property Ombudsman redress scheme and have Client Money protection with ARLA Propertymark. You can find more information on our website at <https://www.benhams.com/membership/>



**Benham & Reeves**

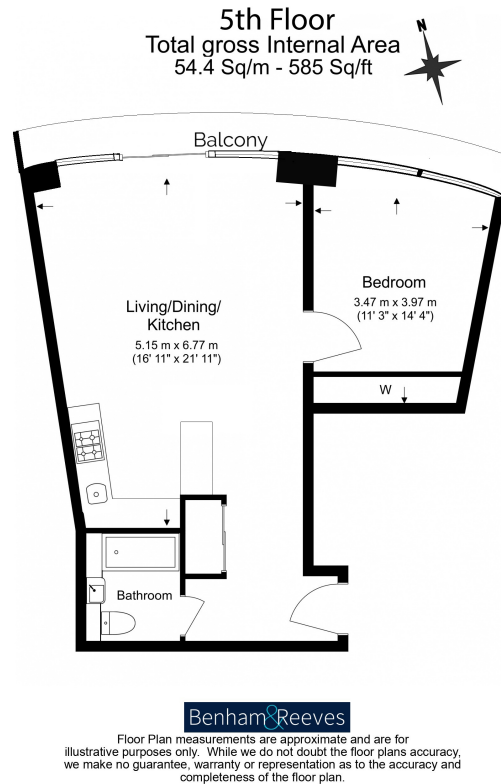




# Marsh Wall, Canary Wharf, E22

£589 per week, £2,552 per month + fees

[www.benhams.com](http://www.benhams.com)



## London branches open six days a week Mon - Sat

Canary Wharf | City | Colindale | Dartmouth Park | Ealing | Fulham  
Hammersmith | Hampstead | Highgate | Hyde Park | Kensington | Kew  
Knightsbridge | Nine Elms | Shoreditch | Southall | Surrey Quays  
Wapping | Wembley | White City | Woolwich

## International offices

China | Hong Kong SAR | India | Indonesia | Qatar | Malaysia | Middle East | Pakistan  
Singapore | South Africa | Thailand | Turkey



Benham & Reeves