



Benham & Reeves

Aqua Vista Square, Canary Wharf, E3

£404 per week, £1,751 per month + fees

 2 Bedrooms  2 Bathrooms  Furnished

Modern high floor apartment with secure entry system situated in a modern gated development on the Canal. Located a ten-minute walk from Langdon Park DLR station.

Please [click here](#) for full detail

Property features

Two Double Bedrooms | Two Bathrooms | Open Plan Living | Fitted Kitchen | Furnished | EPC-C | Balcony | Concierge | Ideal for professional sharers | Langdon Park DLR Station

For more information about this property,
please call our Canary Wharf branch on

020 8036 3200



Redress & Client Money Protection :

Benham and Reeves are members of The Property Ombudsman redress scheme and have Client Money protection with ARLA Propertymark. You can find more information on our website at <https://www.benhams.com/membership/>

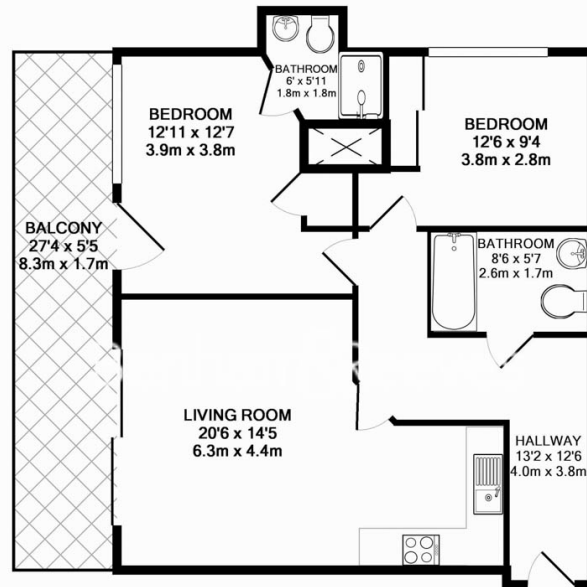
Benham & Reeves



Aqua Vista Square, Canary Wharf, E3

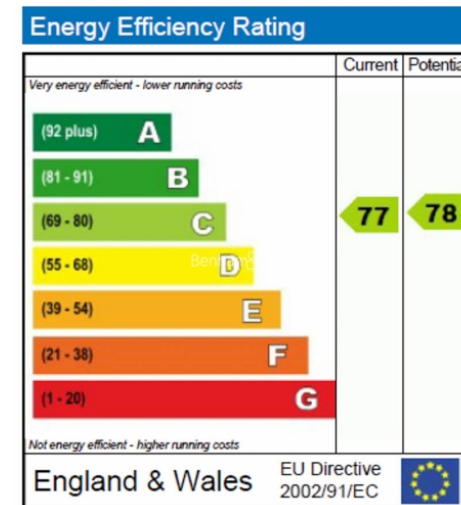
£404 per week, £1,751 per month + fees

www.benhams.com



AQUA VISTA, CRAIG TOWER
TOTAL APPROX. FLOOR AREA 687 SQ.FT. (63.9 SQ.M.)

Whilst every attempt has been made to ensure the accuracy of the floor plan contained here, measurements of doors, windows, rooms and any other items are approximate and no responsibility is taken for any error, omission, or mis-statement. This plan is for illustrative purposes only and should be used as such by any prospective purchaser. The services, systems and appliances shown have not been tested and no guarantee as to their operability or efficiency can be given.
Made with Metropix ©2013



London branches open six days a week Mon - Sat

Canary Wharf | City | Colindale | Dartmouth Park | Ealing | Fulham
Hammersmith | Hampstead | Highgate | Hyde Park | Kensington | Kew
Knightsbridge | Nine Elms | Shoreditch | Southall | Surrey Quays
Wapping | Wembley | White City | Woolwich

International offices

China | Hong Kong SAR | India | Israel | Malaysia | Middle East | Pakistan
Qatar | Singapore | South Africa | Thailand | Turkey



Benham & Reeves