



Benham & Reeves

**Gillender Street, Canary Wharf, E3**

£450 per week, £1,950 per month + fees

🛏 1 Bedroom    🚿 1 Bathroom    🛋  
Furnished/UnFurnished

Modern apartment, with private onsite Cinema and 24 Hr Concierge situated within an impressive development in the heart of Bow .Located close to the DLR Bromley-by-Bow Tube Station (District and Hammersmith & City Lines).

Please [click here](#) for full detail

## Property features

**One Bedroom | One Bathroom | Open Plan Living | Secure Development | Fitted Kitchen | EPC-B | Private Balcony | 24-hour Concierge | Residents Only Gym Cinema Room | Nearby Bromley By Bow Underground Station**

For more information about this property,  
please call our Canary Wharf branch on

**020 8036 3200**

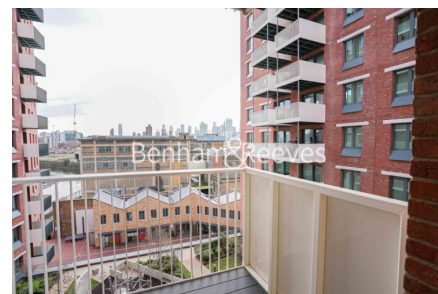
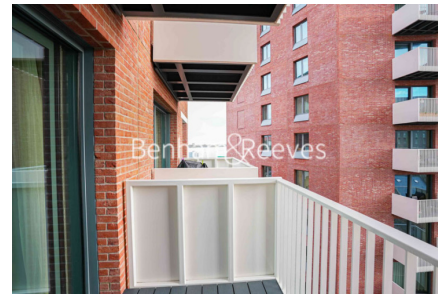
Redress & Client Money Protection :

Benham and Reeves are members of The Property Ombudsman redress scheme and have Client Money protection with ARLA Propertymark. You can find more information on our website at <https://www.benhams.com/membership/>



Benham & Reeves

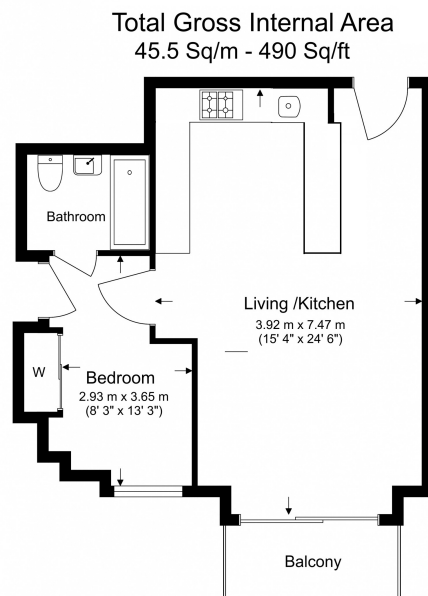




# Gillender Street, Canary Wharf, E3

£450 per week, £1,950 per month + fees

www.benhams.com



Benham & Reeves

Floor Plan measurements are approximate and are for illustrative purposes only. While we do not doubt the floor plans accuracy, we make no guarantee, warranty or representation as to the accuracy and completeness of the floor plan.

Score	Energy rating	Current	Potential
92+	A		
81-91	B	85 B	85 B
69-80	C		
55-68	D		
39-54	E		
21-38	F		
1-20	G		

## London branches open six days a week Mon - Sat

Canary Wharf | City | Colindale | Dartmouth Park | Ealing | Fulham  
Hammersmith | Hampstead | Highgate | Hyde Park | Kensington | Kew  
Knightsbridge | Nine Elms | Shoreditch | Southall | Surrey Quays  
Wapping | Wembley | White City | Woolwich

## International offices

China | Hong Kong SAR | India | Indonesia | Qatar | Malaysia | Middle East | Pakistan  
Singapore | South Africa | Thailand | Turkey



Benham & Reeves