

Benham & Reeves

City Island Way, Canning town, E14

£727 per week, £3,150 per month + fees

🛏️ 2 Bedrooms 🚿 2 Bathrooms 🛋️ Furnished

Modern and spacious apartment, with panoramic views and residents' swimming pool, situated in a desirable development in E14. Located within walking distance of Canning Town Underground and DLR station (Jubilee Line).

Please [click here](#) for full detail

Property features

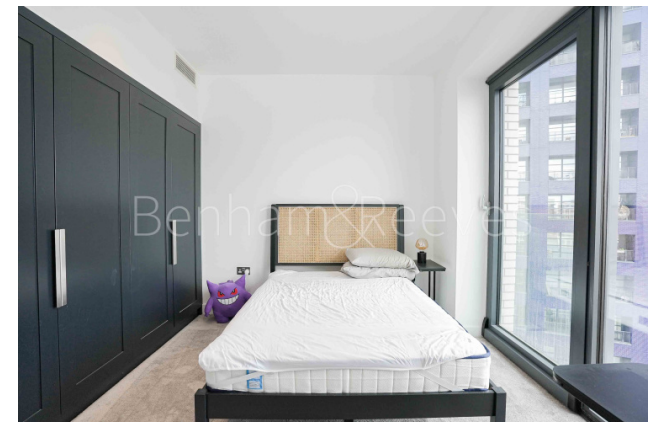
Two large double Bedroom | Brightly Lit Reception with River Views | Two Bathroom | Fitted Kitchen | Furnished | EPC-B | Lift | Residents Gym and pool | Excellent amenities including sauna and steam room and scree | Near Canning town DLR and Jubilee

For more information about this property,
please call our Canary Wharf branch on

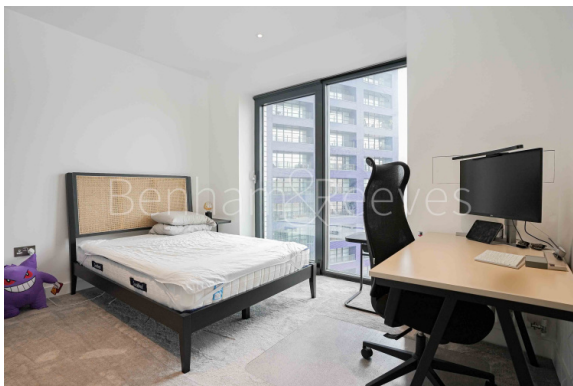
020 8036 3200

Redress & Client Money Protection :

Benham and Reeves are members of The Property Ombudsman redress scheme and have Client Money protection with ARLA Propertymark. You can find more information on our website at <https://www.benhamandreeves.com/membership/>



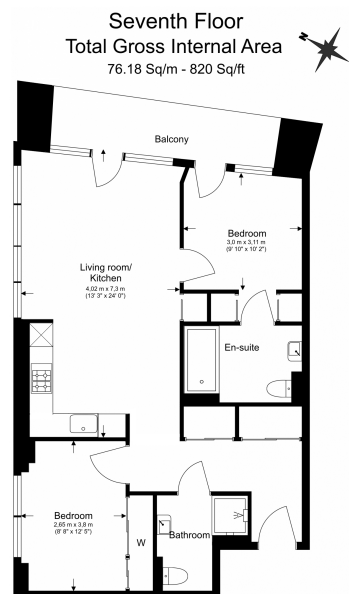
Benham&Reeves



City Island Way, Canning town, E14

£727 per week, £3,150 per month + fees

www.benhams.com



Benham & Reeves

Floor Plan measurements are approximate and are for illustrative purposes only. While we do not doubt the floor plans accuracy, we make no guarantee, warranty or representation as to the accuracy and completeness of the floor plan.

Score	Energy rating	Current	Potential
92+	A		
81-91	B		
69-80	C	80 C	80 C
55-68	D		
39-54	E		
21-38	F		
1-20	G		

London branches open six days a week Mon - Sat

Canary Wharf | City | Colindale | Dartmouth Park | Ealing | Fulham
Hammersmith | Hampstead | Highgate | Hyde Park | Kensington | Kew
Knightsbridge | Nine Elms | Shoreditch | Southall | Surrey Quays
Wapping | Wembley | White City | Woolwich

International offices

China | Hong Kong SAR | India | Indonesia | Qatar | Malaysia | Middle East |
Singapore | South Africa | Thailand | Turkey



Benham & Reeves