



Benham & Reeves

Rathbone Street, Canning Town, E16

£438 per week, £1,900 per month + fees

🛏️ 1 Bedroom 🚿 1 Bathroom 🛋️ Furnished

High specification apartment with private patio situated in a significant and exciting development in Canning Town, an exciting place to call home in East London. The property is located moments from Canning Town Station which has direct trains to Canary Wharf (Jubilee Line). The property is ideally suited to professionals working in Canary Wharf & The City

Please [click here](#) for full detail

Property features

One Double Bedroom | One Bathroom | Open Planned Living Space | Furnished | Fitted Kitchen | EPC-B | Excellent Storage Space | Private Patio area | Ideal for professionals | Nearby Canning Town Station

For more information about this property,
please call our Canary Wharf branch on

020 8036 3200

Redress & Client Money Protection :

Benham and Reeves are members of The Property Ombudsman redress scheme and have Client Money protection with ARLA Propertymark. You can find more information on our website at <https://www.benhamandreeves.com/membership/>



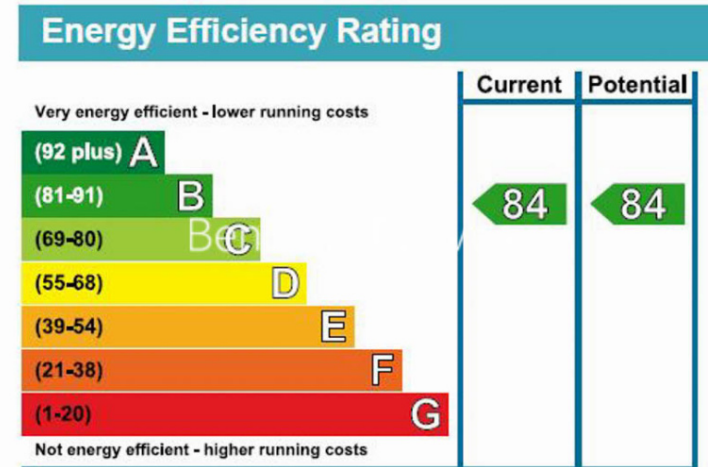
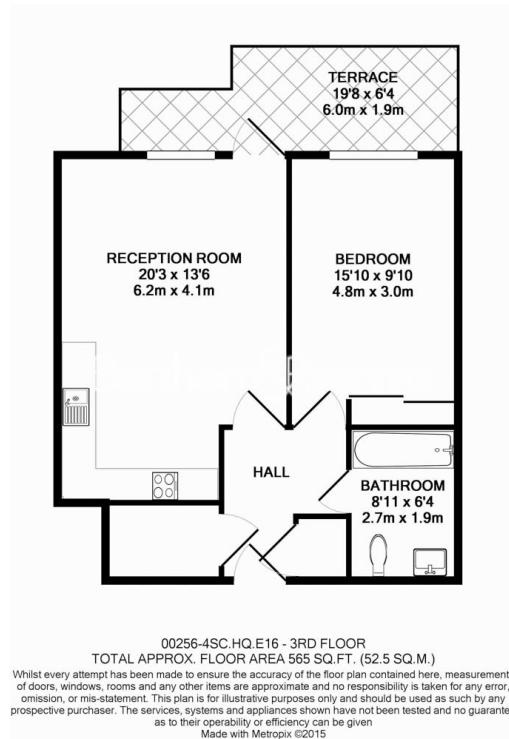
Benham & Reeves



Rathbone Street, Canning Town, E16

£438 per week, £1,900 per month + fees

www.benhams.com



London branches open six days a week Mon - Sat

Canary Wharf | City | Colindale | Dartmouth Park | Ealing | Fulham
Hammersmith | Hampstead | Highgate | Hyde Park | Kensington | Kew
Knightsbridge | Nine Elms | Shoreditch | Southall | Surrey Quays
Wapping | Wembley | White City | Woolwich

International offices

China | Hong Kong SAR | India | Indonesia | Qatar | Malaysia | Middle East | Pakistan
Singapore | South Africa | Thailand | Turkey



Benham & Reeves