



Benham&Reeves

**White City Living, Cascade Apartments, Cascade
Way, White City W12**

£625 per week, £2,708 per month + fees

 1 Bedroom  1 Bathroom  Furnished

An impeccable Manhattan 1 bedroom apartment set in White City Living within the heart of Shepherds Bush. The property is located close to the Westfield Shopping Centre and 2-minutes' walk from White City & Wood Lane underground stations. EPC-B

Please [click here](#) for full detail

Property features

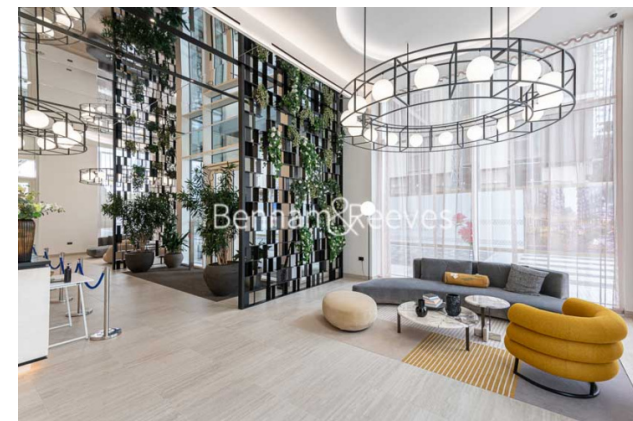
Manhattan 1 Bedroom Apartment with Built-in Wardrobe (7th Fl | Open plan Reception Room with Dining Area & Floor to Ceiling | Fully Fitted Kitchen Integrated with well-known Appliances | Luxurious Double Bathroom with Large Mirrors & Ample Storage | Internal Area: 478 Sq Ft / EPC-B / Garden View / Utility Roo | EPC-B | Quality Furnished / LED Spotlights / Private Balcony (55 Sq | Air Ventilation / Underfloor Heating / Air Conditioning | Residents' Swimming Pool, Gym, Meeting Room, Resident's Lounge | White City & Wood Lane Underground Stations

For more information about this property,
please call our White City branch on

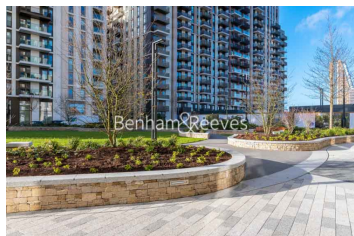
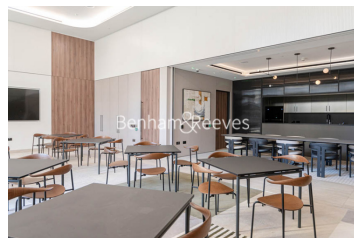
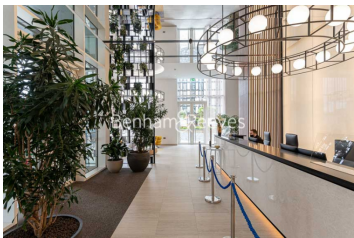
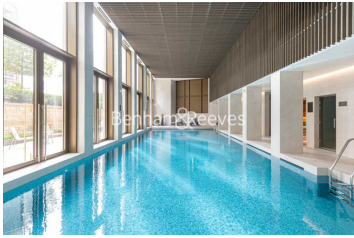
020 8187 0888

Redress & Client Money Protection :

Benham and Reeves are members of The Property Ombudsman redress scheme and have Client Money protection with ARLA Propertymark. You can find more information on our website at <https://www.benhams.com/membership/>



Benham & Reeves



White City Living, Cascade Apartments, Cascade Way, White City W12

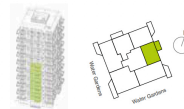
£625 per week, £2,708 per month + fees

www.benhams.com

SUITE



Internal area	44.4 m²	478 sq ft
External area	5.1 m²	55 sq ft
Kitchen/Living/Dining	5.52 x 3.99 m	18ft 1" x 13ft 1"
Bedroom	3.18 x 3.00 m	10ft 5" x 9ft 10"
Bathroom	1.64 x 3.47 m	5ft 5" x 11ft 5"



C Coal Cupboard U Utility Cupboard W Wardrobe WD Washer Dryer S Shelving WM Washing Machine • Distance Indicator TD Tumble Dryer
Floorplans shown for White City Living are for approximate measurements only. Exact layout and sizes may vary. All measurements may vary within a tolerance of 5%. To increase legibility these plans have been scaled to fit the page. Windows and doors may be in a different order to those shown on the plan. The information is not intended to be used for contract purposes. Kitchen appliances/furniture positions indicated are for guidance only. External cladding and window location and size are indicative and subject to change. Facade projections dependent on apartment location. Building dimensions may be subject to change.

Score	Energy rating	Current	Potential
92+	A		
81-91	B	86 B	86 B
69-80	C		
55-68	D		
39-54	E		
21-38	F		
1-20	G		

London branches open six days a week Mon - Sat

Canary Wharf | City | Colindale | Dartmouth Park | Ealing | Fulham
Hammersmith | Hampstead | Highgate | Hyde Park | Kensington | Kew
Knightsbridge | Nine Elms | Shoreditch | Southall | Surrey Quays
Wapping | Wembley | White City | Woolwich

International offices

China | Hong Kong SAR | India | Indonesia | Qatar | Malaysia | Middle East | Pakistan
Singapore | South Africa | Thailand | Turkey



Benham & Reeves