



Benham & Reeves

Ingrebourne Apartments, Central Avenue, SW6

£750 per week, £3,250 per month + fees

 2 Bedrooms  2 Bathrooms  Furnished

A stunning large apartment situated in a popular development located along the River Thames. Imperial Wharf Overground station with excellent travel links around London, is within walking distance.

Please [click here](#) for full detail

Property features

2 Double Bedrooms (6th Floor with Lift) | Large Reception with Dining Area | Fully Fitted Open-Plan Kitchen with well know Appliances | 2 Luxury Bathrooms | 24/7 concierge | EPC-B | Residents Gym Included | Along the river Thames | Short Walk to Imperial Wharf Station and Bus Routes

For more information about this property,
please call our Fulham branch on

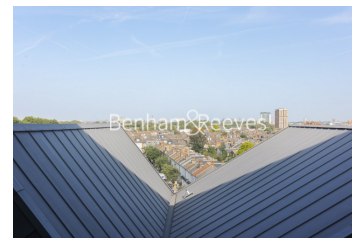
020 7348 7620

Redress & Client Money Protection :

Benham and Reeves are members of The Property Ombudsman redress scheme and have Client Money protection with ARLA Propertymark. You can find more information on our website at <https://www.benhamandreeves.com/membership/>



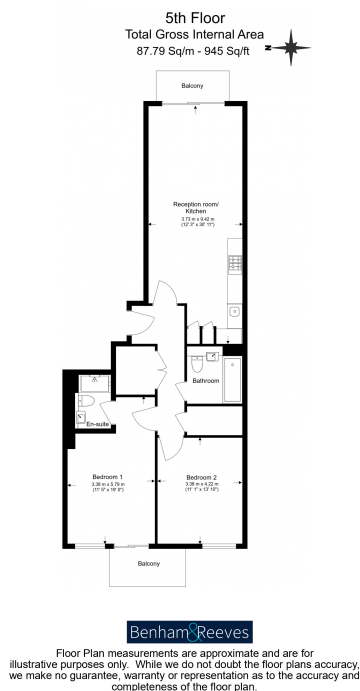
Benham & Reeves



Ingrebourne Apartments, Central Avenue, SW6

£750 per week, £3,250 per month + fees

www.benhams.com



Score	Energy rating	Current	Potential
92+	A		
81-91	B		83 B
69-80	C	80 C	
55-68	D		
39-54	E		
21-38	F		
1-20	G		

London branches open six days a week Mon - Sat

Canary Wharf | City | Colindale | Dartmouth Park | Ealing | Fulham
Hammersmith | Hampstead | Highgate | Hyde Park | Kensington | Kew
Knightsbridge | Nine Elms | Shoreditch | Southall | Surrey Quays
Wapping | Wembley | White City | Woolwich

International offices

China | Hong Kong SAR | India | Indonesia | Qatar | Malaysia | Middle East |
Singapore | South Africa | Thailand | Turkey



Benham & Reeves